



SCRUTINY BOARD (CITY DEVELOPMENT)

Meeting to be held in Civic Hall, Leeds, LS1 1UR on
Wednesday, 18th November, 2015 at 10.00 am

(A pre-meeting will take place for ALL Members of the Board at 10.00 a.m.)

MEMBERSHIP

Councillors

A Castle	Harewood;
D Cohen	Alwoodley;
P Davey	City and Hunslet;
R Harington	Gipton and Harehills;
J Heselwood	Bramley and Stanningley;
M Ingham	Burmantofts and Richmond Hill;
S McKenna	Garforth and Swillington;
C Townsley	Horsforth;
P Truswell (Chair)	Middleton Park;
P Wadsworth	Guiseley and Rawdon;
J Walker	Headingley;

Please note: Certain or all items on this agenda may be recorded

Agenda compiled by:
Guy Close
Scrutiny Support Unit
Tel: 39 50878

Principal Scrutiny Adviser:
Sandra Pentelow
Tel: 24 74792

A G E N D A

Item No	Ward/Equal Opportunities	Item Not Open		Page No
1			<p>APPEALS AGAINST REFUSAL OF INSPECTION OF DOCUMENTS</p> <p>To consider any appeals in accordance with Procedure Rule 25* of the Access to Information Procedure Rules (in the event of an Appeal the press and public will be excluded).</p> <p>(* In accordance with Procedure Rule 25, notice of an appeal must be received in writing by the Head of Governance Services at least 24 hours before the meeting).</p>	
2			<p>EXEMPT INFORMATION - POSSIBLE EXCLUSION OF THE PRESS AND PUBLIC</p> <p>1 To highlight reports or appendices which officers have identified as containing exempt information, and where officers consider that the public interest in maintaining the exemption outweighs the public interest in disclosing the information, for the reasons outlined in the report.</p> <p>2 To consider whether or not to accept the officers recommendation in respect of the above information.</p> <p>3 If so, to formally pass the following resolution:-</p> <p>RESOLVED – That the press and public be excluded from the meeting during consideration of the following parts of the agenda designated as containing exempt information on the grounds that it is likely, in view of the nature of the business to be transacted or the nature of the proceedings, that if members of the press and public were present there would be disclosure to them of exempt information, as follows:</p> <p>No exempt items have been identified.</p>	

Item No	Ward/Equal Opportunities	Item Not Open		Page No
3			<p>LATE ITEMS</p> <p>To identify items which have been admitted to the agenda by the Chair for consideration.</p> <p>(The special circumstances shall be specified in the minutes.)</p>	
4			<p>DECLARATION OF DISCLOSABLE PECUNIARY INTERESTS</p> <p>To disclose or draw attention to any disclosable pecuniary interests for the purposes of Section 31 of the Localism Act 2011 and paragraphs 13-16 of the Members' Code of Conduct.</p>	
5			<p>APOLOGIES FOR ABSENCE AND NOTIFICATION OF SUBSTITUTES</p> <p>To receive any apologies for absence and notification of substitutes.</p>	
6			<p>MINUTES - 14 OCTOBER 2015</p> <p>To confirm as a correct record, the minutes of the meeting held on 14 October 2015.</p>	1 - 4
7			<p>SESSION 2 - SCRUTINY INQUIRY INTO DIGITAL INCLUSION</p> <p>To receive reports from the Director of City Development and the Chief Information Officer presenting information as part of the Scrutiny Board's Inquiry into Digital Inclusion.</p>	5 - 60
8			<p>INCLUSIVE, ACCESSIBLE AND SUSTAINABLE CULTURAL PROVISION IN LEEDS</p> <p>To receive a report from the Chief Officer (Sport and Culture) updating the Scrutiny Board on the development of inclusive, accessible and sustainable cultural provision in Leeds. The Board will also receive an overview on European Capital of Culture progress.</p>	61 - 74

Item No	Ward/Equal Opportunities	Item Not Open		Page No
9			<p>WORK SCHEDULE</p> <p>To agree the Board's work schedule for the remainder of the municipal year.</p>	75 - 98
10			<p>DATE AND TIME OF NEXT MEETING</p> <p>Wednesday, 16 December 2015 at 10.00am (pre-meeting for all Board Members at 9.30am)</p> <p>THIRD PARTY RECORDING</p> <p>Recording of this meeting is allowed to enable those not present to see or hear the proceedings either as they take place (or later) and to enable the reporting of those proceedings. A copy of the recording protocol is available from the contacts on the front of this agenda.</p> <p>Use of Recordings by Third Parties – code of practice</p> <ul style="list-style-type: none"> a) Any published recording should be accompanied by a statement of when and where the recording was made, the context of the discussion that took place, and a clear identification of the main speakers and their role or title. b) Those making recordings must not edit the recording in a way that could lead to misinterpretation or misrepresentation of the proceedings or comments made by attendees. In particular there should be no internal editing of published extracts; recordings may start at any point and end at any point but the material between those points must be complete. 	

SCRUTINY BOARD (CITY DEVELOPMENT)

WEDNESDAY, 14TH OCTOBER, 2015

PRESENT: Councillor P Truswell in the Chair

Councillors A Castle, D Cohen, P Davey,
R Harington, M Ingham, J McKenna,
P Wadsworth, J Walker and N Walshaw

27 Late Items

There were no late items.

28 Declaration of Disclosable Pecuniary Interests

There were no disclosable pecuniary interests declared to the meeting.

29 Apologies for Absence and Notification of Substitutes

Apologies for absence were submitted by Councillor S McKenna and Councillor J Heselwood who were substituted by Councillor J McKenna and Councillor N Walshaw.

30 Minutes - 9 September 2015

RESOLVED – That the minutes of the Scrutiny Board (City Development) meeting held on 9 September 2015, be approved as a correct record.

31 Session 1 - Scrutiny Inquiry into Digital Inclusion

The Director of City Development and the Chief Information officer submitted a report which provided the Scrutiny Board with the information required to undertake the first session of the inquiry into digital inclusion.

The following information was appended to the report:

- Internet use, quarter 1 (Jan – Mar) 2015, by NUTS 3 area, United Kingdom
- 2014 Digital Nation? – Tinder Foundation

The following representatives were in attendance and responded to Members' queries and comments:

- Councillor J Lewis – Exec Board Member – Resources and Strategy
- Councillor D Coupar – Exec Board Member – Communities
- Richard Hart – Deputy Head of Service (Libraries)
- Katie Dunlevey – Senior Economic Development Officer

- Phil Cole – Head of Funding Programme and Business Support
- John Bullivent – Contract Manager
- Lee Hemsworth – Chief Officer (Customer Access)
- Ian Jones – Solutions Architect

The key areas of discussion were:

- The main elements to digital inclusion, people and infrastructure and the introduction and expansion of digital services by Leeds City Council since 1994.
- The variables that cause the digital divide and their impact.
- National internet usage and how this information is used to assess usage in Leeds. The Scrutiny Board requested if intelligence existed specific to Leeds and were advised that work is being undertaken to gather this type of information.
- Super connected cities, the Governments broadband strategy , BDUK and the delivery of phase 1of Superfast West Yorkshire. The Scrutiny Board requested clarification of the cabinets upgraded under phase 1. This will be provided in a future session of the inquiry.
- The use of council assets to deliver free public wifi across the district and the pilot project using council high rise space to provide wifi for the tenants living there.
- Clarity was sought about the services available to people across the City to provide digital literacy training and support, how this is communicated, motivating people to get on line and understanding the technology that people already have such as smart phone technology. The Board were advised that it is not clearly understood what is currently being provided across the City and gathering of this information is required.
- The Board requested further information about the Smart Cities project and Smart Cities Steering Group and its role in reducing the digital divide.

RESOLVED –

- a) The report was noted.
- b) That the information requested by the Scrutiny Board be brought to a future session of the inquiry.
- c) That a representative from the Smart Cities Steering Group be invited to the November inquiry session to advise the board about their role, aspirations, plans and achievements.

32 Leeds Lets Get Active and the role of the Local Authority in providing accessible Leisure Centres

The Head of Sport and Active Lifestyles submitted a report which provided an update on Leeds Let's Get Active (LLGA) project and the ongoing challenges in developing the Vision for Leisure Centres.

The following information was appended to the report:

- Report to the Health and Wellbeing Board, Leeds Let's Get Active 30th September 2015, author Mark Allman

The following representatives were in attendance and responded to Members' queries and comments:

- Councillor Lisa Mulherin – Executive Board Member
- Mark Allman – Head of Service for Sport
- Susan Haigh – Active Lifestyles Manager

The key areas of discussion were:

- Cuts to public health funding and the uncertainty of funding for Leeds Let's Get Active after March 2016. The cost effectiveness of early intervention to prevent ill health in the future and the cost benefits to the NHS in the future. The importance of investment in ill health prevention.
- The challenge of the current leisure centre stock and ensuring that there is sufficient investment to keep them fit for purpose in the areas where they are needed the most. Some leisure centres will require significant investment in a time when significant savings have to be made.
- The successful outcomes from the LLGA scheme which has resulted in the collection of an extensive amount of data and better engagement with inactive people.
- The extent of reaching inactive people through digital communication using digital platforms.
- Clarity regarding the re-engagement with those 30k people who registered but did not attend sessions. The Board were advised that there is due to be some automatic communication in the new future.
- Clarity regarding numbers of people attending and frequency of visits. The Board was advised that this information was not available at the meeting but could be provided. The Board stated the information would identify what amount of investment per person has been made to generate that level of activity compared to the cost of NHS treatment and the saving that represents. The Board was further advised that there is going to be a return on investment study done by Leeds University, interim results may be available in the new year, the whole project will take 3-4 years.
- Clarity about facilities to meet the needs of disabled people and to train staff to use equipment. The Board were advised that the approach is inclusion, with extensive staff training and improvement is always a priority.
- Clarity about the strength of relationships with NHS to ensure referral to Leeds Let's Get Active. The Board were advised that some CCG's are making referrals and that social prescribing could be enhanced. Work is being done to consider this further.

RESOLVED –

- a) The report was noted
- b) That the draft Vision for Leisure Centres be brought to a future meeting of the Scrutiny Board (City Development)
- c) That the information requested by the Scrutiny Board be provided.

33 Work Schedule

A report was submitted by the Head of Scrutiny and Member Development which detailed the Scrutiny Board's draft work programme for the current municipal year.

The draft Scrutiny Board (City Development) work schedule for 2015/2016 and the Executive Board minutes for 23 September 2015 were appended to the report.

Sandra Pentelow, Principal Scrutiny Adviser, presented the report and responded to Members' queries and comments.

RESOLVED – The Scrutiny Board (City Development) noted the content of the report and agreed the revised work programme.

34 Date and Time of Next Meeting

Wednesday, 18 November 2015 at 10.00am (pre meeting for all Board Members at 9.30am)

(The meeting concluded at 12.25pm)

Report of the Director of City Development and the Chief Information Officer

Report to Scrutiny Board (City Development)

Date: 18 November 2015

Subject: Scrutiny Inquiry into Digital Inclusion – Session 2

Are specific electoral Wards affected? If relevant, name(s) of Ward(s):	<input type="checkbox"/> Yes <input checked="" type="checkbox"/> No
Are there implications for equality and diversity and cohesion and integration?	<input type="checkbox"/> Yes <input checked="" type="checkbox"/> No
Is the decision eligible for Call-In?	<input type="checkbox"/> Yes <input checked="" type="checkbox"/> No
Does the report contain confidential or exempt information? If relevant, Access to Information Procedure Rule number: Appendix number:	<input type="checkbox"/> Yes <input checked="" type="checkbox"/> No

Summary of main issues

To provide Scrutiny Board (City Development) with the information required to undertake the second session of the inquiry into digital inclusion.

The report responds to areas of interest raised by the Scrutiny Board at the 14th of October meeting and continues to explore the city’s digital infrastructure, the gap between those who are digitally engaged and those who are not, the reasons why this may be the case, and the impact this has and then discusses opportunities for digital inclusion.

Recommendations

Scrutiny Board is requested:

- a) to note the contents of this report
- b) make recommendations as deemed appropriate

1 Purpose of this report

- 1.1 To provide Scrutiny Board (City Development) with the information required to undertake the second session of the inquiry into digital inclusion.
- 1.2 The report responds to areas of interest raised by the Scrutiny Board at the 14th of October meeting and continues to explore the city's digital infrastructure, the gap between those who are digitally engaged and those who are not, the reasons why this may be the case, and the impact this has and then discusses opportunities for digital inclusion.

2 Background information

- 2.1 The Scrutiny Board agreed the terms of reference of the 9th of September and the first session of the inquiry was on the 14th of October. This first session provided the Scrutiny Board with an overview about the objectives to be achieved and our aspirations as a local authority.
- 2.2 At the first session the Scrutiny Board was provided with an overview of the two main elements to digital inclusion, firstly the people who use digital services – having the skills, motivation and confidence to engage digitally, and secondly the infrastructure – is there an appropriate network/broadband service for them to connect to. The Board requested further information during the debate which is referred to in this report.
- 2.3 The key areas of focus for the session are as follows:
 - Smart Cities Digital Literacy Project
 - To provide requested information to promote further understanding of the infrastructure across Leeds including access to digital and online services in council buildings. To understand how we could identify what support is being provided in Leeds by all sectors including the Council and explore the benefits of this.
- 2.4 At the December meeting the Scrutiny Board will focus on the strategy going forward and supporting individuals and communities.

3 Main issues

3.1 Smart Cities

- 3.1.1 The Chief Information Officer, Dylan Roberts, will be presenting the Scrutiny Board with an overview of the Smart Cities work, its benefits and a particular focus on the critical importance of digital literacy.
- 3.1.2 Leeds has established a Smart Cities Steering Group chaired by the Deputy Chief Executive and involving officers from across the Council, representing Economic Development, Adult Social Care, Public Health, ICT, Policy and Intelligence, as well as the Library and Information Service.
- 3.1.3 Attached as appendix 1 is an example of some of the smart cities work in Leeds which relates to “Leeds being the Best Place to Grow Old In”

3.1.4 For the Smart Cities agenda to benefit all depends on the confidence and ability of citizens and businesses embrace and make use of technologies within their everyday lives. Not being digitally literate will be equivalent to not being able to read and write. Within the framework of the Smart Cities Steering Group the Library and Information Service is leading on the 'people' element with a project brief focussing on Digital Literacy for Citizens and Businesses.

3.1.5 The objective of this project is to ensure that:

- There is an understanding of the digital needs of citizens, communities and business staff.
- To develop a strategic options appraisal and business case for how the Council might take a leadership role to ensure that citizens, communities, and businesses in most need are afforded the opportunity to participate in the digital world.

3.1.6 The proposed scope of this project is to:

- Determine the digital skills which are required for citizens, communities, and business staff in the Smart City context.
- Determine the training courses, tools, strategies and other resources available in Leeds and nationally that would be of benefit to address this skills gap.
- Identify the gaps between the baseline position and the skills required.
- Determine the approach and framework for closing the gap.
- Develop an engagement strategy to give awareness of these resources to the groups above.
- Determine take up via training sessions offered and amount of signposting.
- Co-ordination and communication of digital skills training and learning opportunities across the region.

3.1.7 No funding or resources have been identified to deliver this aspiration and a business case will be drawn up for this.

3.1.8 There are clear parallels between the aims of the Digital Literacy for Citizens and Business Staff project and those of this Scrutiny Board.

3.2 Identifying where support is needed.

3.2.1 There is compelling evidence that says that being digitally literate and included can significantly increase your life chances, in terms of health and wellbeing, getting a job and in tackling isolation and other challenges around social exclusion. Those most likely to be excluded digitally are also those most at risk from exclusion in other, and often multiple, areas, e.g. age, disability or income. The question arises about how and where should we focus support; could this be focused on super output areas or on communities with high levels of local deprivation, high unemployment, and above average welfare claimants? This is information that we already know, in addition to JSNA information (which highlights health needs) and could be a practical starting point to any future business case.

3.2.2 In June 2014 Leeds City Council published 'Get online in Leeds', copy attached at appendix 2. This was a guide to free services for getting online and accessing

basic ICT training. The document requires updating, including reference to where free wi-fi is available, and should then be published in a sustainable way allowing information to remain current. This, and other opportunities for improving the awareness of available training and ICT access, fall within the scope of the Smart Cities - Digital Literacy for Citizens and Business Staff project and will be completed through partnership between Library and Information Services and Citizens and Communities during 2015/16.

3.2.3 Other examples being investigated are the options for searching for ICT/digital training opportunities by skill and/or postcode. To stay current this would most likely be an online resource however support to customers not yet online would be delivered through staff at sites, such as libraries and community hubs, accessing this information and referring the customer to a suitable training pathway.

3.3 Leeds Landscape - Connectivity and infrastructure across Leeds and the Provision of Support to Promote Digital Inclusion.

3.3.1 At the last inquiry session the Scrutiny Board considered digital inclusion in its widest context and the infrastructure position. It was acknowledged that where connectivity options are limited and/or deemed to be (prohibitively) expensive there can be a negative impact in digital inclusion terms. Access to good quality connectivity is recognised as an important driver of social inclusion and a key determinant of economic development.

3.3.2 At the last inquiry session the Board were presented with maps showing national statistics relating to internet usage. The national statistics were applied to Leeds population. The Board were advised that at this present time work is being undertaken to identify a more accurate picture of local usage of the internet and the means by which people are connecting.

3.3.3 The Board were interested in finding out more about access. As the Board discussed getting a comprehensive view of all the factors relating to access can be complex. Those individuals that do go 'online' may do so by a number of means – they may use their smartphone or tablet to access some content. Some users may have internet connected televisions which rely on either a traditional broadband connection or mobile connection to the internet. Many users will have fixed line connectivity (through a phone line into their home or business premises) but others may solely use 'data' provision within their mobile phone contract. There is variation in the reliability of mobile connectivity for example some people find that they have very poor coverage inside their home.

3.3.4 The Board requested some further information about the current position with broadband infrastructure across the city. To this end maps are appended to this report which show the extent of the publicly funded broadband infrastructure activity across the district.

3.3.5 There are three maps (appendix 3), one of the Leeds city area, one of the Leeds City Council geography and one showing the whole of the Phase 2 project area of West Yorkshire and York. The three maps illustrate by postcode;

- those areas to which superfast broadband was made available via the West Yorkshire Local Broadband Project, 2013-15 (in green hashes)

- those areas which will be included in the Phase 2 West Yorkshire and York (WY&Y) Broadband Programme, 2015-18 (in blue)

- 3.3.6 There are large areas of the maps where there has been no publicly funded activity. These are areas where commercial activity has delivered superfast broadband connectivity. Coverage for superfast broadband for the Leeds MD stood at 90.7% of premises prior to the commencement of the publicly funded infrastructure build. By the end of the BDUK programmes Leeds coverage for superfast should stand at 97.5%.
- 3.3.7 As noted in the previous report (and in the response to DCMS Select Committee) there are limitations associated with using broad coverage statistics to demonstrate success. The position for individual premises and groups of premises can be obscured. However, it is true to say that even prior to the commencement of the Phase I publicly funded programme Leeds MD had relatively good levels of superfast coverage. By the end of the programme superfast connectivity will be an option for many more residential and business users across the district.
- 3.3.8 What the maps do not show is the extent of either the BT or Virgin commercial rollouts. This information, up until very recently, has been company confidential. However BT data has recently been released to the Programme Management team and is currently being mapped.
- 3.3.9 The maps also do not show any coverage by local wireless providers (e.g. AQL, LN Comms) or mobile coverage. The West Yorkshire & York Programme Management team do not have this information.
- 3.3.10 Supplementary information was provided to the Scrutiny Board which highlighted that the 27th July 2015 The Department of Culture Media and Sport select committee announced their intention to undertake an inquiry into 'Establishing world-class connectivity throughout the UK' and invited written submissions. The West Yorkshire Combined Authority provided a written response on the 30th of September which the authority has kindly agreed to share with the Scrutiny Board. The response details a number of recommendations and action points with regard to the region and more specifically Leeds. The Board specified that it would like a further opportunity to discuss this at the November meeting therefore the terms of reference and the WYCA response are attached as appendix 4.

3.4 Leeds is the Best City for Wifi

- 3.4.1 As ownership and use of mobile devices increases there is an expectation to be able to access wifi in both indoor and outdoor environments. Over the last 18 months Leeds City Council has been activity engaged in a programme of activity to roll out extensive free public wifi provision.
- 3.4.2 Free to access public wifi is now available in 106 public buildings owned and maintained by Leeds City Council. The buildings included in the programme include local libraries, leisure centres, community centres, one-stops and children's centres, museums and visitor attractions. The provision is made in public indoor areas of the buildings concerned although in some cases the provision is able to be accessed from outside the building. A full list is included at appendix 5.

- 3.4.3 Free public wifi is also available on Millennium Square and the pedestrianised area of Briggate.
- 3.4.4 The council is working on a pilot project with a number of wireless broadband providers (who are primarily engaged in the business broadband market) to develop a pilot project which will allow providers to use roof space on LCC owned residential towerblocks to build wireless broadband networks. As part of the permission to occupy the roof spaces providers will be asked to provide a free residential wifi service to residents living within the towerblocks. This pilot project will allow LCC to establish some baseline information about the type of connectivity residents in the blocks concerned are already using as well as takeup and usage of the free wifi once available. The first of these buildings is due to go live with a wifi service for residents at the end of November.
- 3.4.5 To extend provision of free public wifi further across the district the council has awarded a concession contract to a local internet company aql which allows them to access LCC assets such as lamp posts, street furniture etc. in order to develop free public wifi networks. The concession agreement with aql will widen access to free public wifi across more areas of the city, allowing more people the potential to access free connectivity using their own devices. Dr Adam Beaumont the Chief Executive of aql will be attending the meeting on the 18th of November to provide further information about the work of aql and the benefits of free public wifi.
- 3.4.6 The Council will continue to explore how LCC assets can be used in order to extend connectivity options throughout the district. Other local authorities are making creative use of concession contracts in order to secure additional services for tenants and residents in their areas. Forthcoming schemes in Leeds such as the District Heating Scheme potentially provide an opportunity to extend fibre networks as part of the building work associated with the project.

4 Corporate Considerations

4.1 Consultation and Engagement

- 4.1.1 Consultation has been undertaken between officers across City Development, including Libraries and Economic Development, Citizens and Communities, and Strategy and Resources. Further research has been carried out including a review of Office of National Statistics and Tinder Foundation data relating to digital take up. Further consultation will involve other stakeholders and partners as the Smart Cities' project Digital Literacy for Citizens and Business Staff develops.

4.2 Equality and Diversity / Cohesion and Integration

- 4.2.1 An equality and impact assessment has not been completed at this stage, however, national evidence suggests that older people, those on low incomes, those with low educational attainment and people with disabilities are most likely to be excluded from digital activity
- 4.2.2 An equality and impact assessment will be completed as part of the Smart Cities project Digital Literacy for Citizens and Business Staff to ensure that these national and any locally determined issues and appropriate actions are identified.
- 4.2.3 Equality and diversity will be a consideration throughout the Scrutiny Inquiry and due regard will be given to equality through the use of evidence, written and verbal, outcomes from consultation and engagement activities.

4.2.4 Where an impact has been identified this will be reflected in the final inquiry report, post inquiry. Where a Scrutiny Board recommendation is agreed the individual, organisation or group responsible for implementation or delivery should give due regard to equality and diversity, conducting impact assessments where it is deemed appropriate.

4.3 Council policies and the Best Council Plan

4.3.1 Support for digital inclusion across the city contributes to the Strategic Objectives of :

- supporting communities and tackling poverty
- promoting sustainable and inclusive economic growth
- delivering the better lives programme
- becoming a more efficient and enterprising council

4.3.2 and link strongly to the Best City Outcomes of:

- Live with dignity and stay independent for as long as possible
- Do well at all levels of learning and have the skills they need for life
- Earn enough to support themselves and their families
- Enjoy greater access to green space, leisure and the arts

4.4 Resources and value for money

4.4.1 Improvements to digital infrastructure, communications systems and transactions, as well as ensuring that the city's citizens have the skills to utilise them, will help ensure greater efficiencies.

4.5 Legal Implications, Access to Information and Call In

4.5.1 None.

4.6 Risk Management

4.6.1 None.

5 Conclusions

5.1 Digital literacy is, or if not will soon be, as important as reading and writing. Not being able to interact with devices, transact, communicate, work and inform yourself through digital means will result in significant disadvantage and possible exclusion. For Leeds to be the Best City all need to be digitally literate starting with the people most in need.

5.2 Work is already being undertaken within Leeds to deliver improved digital literacy but it is recognised that the offer requires greater cohesion, collaboration and promotion to reduce the literacy gap and for Leeds to become the Best City for Digital. This inevitably would require greater investment. These aspirations will progress under the umbrella of the Smart Cities programme.

6 Recommendations

6.1 Scrutiny Board is requested to:

- a) note the contents of this report.
- b) make recommendations as deemed appropriate

7 Background documents¹

7.1 None

¹ The background documents listed in this section are available to download from the Council's website, unless they contain confidential or exempt information. The list of background documents does not include published works.

Update on the Age Friendly Leeds Smart City Projects

1. About the project: The objective of the Age Friendly Smart City project is to develop robust technology solutions that can *empower* older residents and make Leeds the best city to grow old in. During this six-month project, Leeds City Council will co-produce solutions with older residents, key stakeholders and a cohort of independent technical experts. These experts work in fields such as wearables technology, Internet of Things and open data. The focus is on improving the lives of older people as well as enabling better health and wellbeing outcomes.

2. Progress to date:

Usability workshop with sheltered homes to test MESH boxes

The outcome of our first project was the MESH communication boxes to provide one button access to digital communications. This allowed isolated residents within a sheltered housing complex to easily connect and communicate with each other and thus reduce isolation. In August we ran a usability workshop with residents during which we introduced prototype boxes and asked for feedback. Our oldest participant was 97! From this workshop we have 4 use cases to deploy the boxes. We also have buy-in from the manager and residents of the sheltered homes. The prototypes are now being converted into fully operational models. These will be deployed in the sheltered homes with the help of the libraries team. Early indications are that these have been a significant success with high satisfaction from testers. If the results of the pilot is successful, these boxes can be rolled out to other Sheltered homes.



Successful Transport Innovation Lab in partnership with WYCA

We held our second Innovation Lab on the theme of Transport in August. In this lab older citizens and technologists have co-produced an idea, which is being developed into a fully working proof of concept. The solution is a portable beacon that uses real-time data transmitted from the GPS (Global Positioning System) in a bus to let the user know the amount of time remaining for his or her bus to arrive at the stop. Currently the arrival information is only available at the bus stop. Giving older people access to this information in their homes and in public buildings can have an impact

on their confidence and ability to use public transport. We partnered with West Yorkshire Transport Authority to run this lab and they are offering us support to trial this beacon in a community centre, doctor's surgery, supermarket and community bus stop. The proof of concept is being developed and will first undergo usability testing before the trial. This second lab is an example of how we are engaging with the community and working in collaboration with key agencies to produce solutions that can have a positive impact on the quality of life and independence of older residents in the city.

Community workshops in Leeds

As the scope of the Age Friendly programme grows, we want to engage the wider community on important subjects that may be considered taboo. With this in mind, we held two workshops in August. These were attended by 50 participants. Participants included older people, council staff and other service providers, voluntary sector organisations and a small group of residents. The first session was to understand what an age friendly city means to this mixed group participants. It was a fact-finding exercise that will help us develop additional programmes. In the second session we uncovered barriers as well as solutions to help older residents and their family and friends plan for death. This second session compliments the work that is already taking place in the city via events such as the Death Cafe. We received some coverage of these sessions in Yorkshire Post. For example: <http://www.yorkshireeveningpost.co.uk/news/latest-news/top-stories/building-blocks-to-beat-isolation-in-leeds-1-7426835>

Working with a Neighbourhood Network

Our Third Innovation lab will run on October 2, the day after the International Day of Older Persons. The theme of this lab is community safety and for the first time it will be run outside of the city centre in partnership with the MAECare Neighbourhood Network.

November Workshops and Serious Games

In addition to the Innovation Labs and pilot projects, we are planning a series of community workshops that will be run across the city in November. We have already received proposals for sessions from a range of experts. The goal of these workshops is to engage in positive and constructive dialogue with older people. These workshops are inclusive events and we will continue to encourage participation from a wide range of organisations and backgrounds to join the Age Friendly agenda.

Secondly, we are in the process of organising a Serious Games project. Through this project, we want to transform the stories about older people that have been captured by organisations such as Black Health Initiative into interactive games for young people. This is based on a successful approach developed by a grassroots organisation in Alaska. Serious Games is also a growing genre of computer games.

This is a cross-generational project where the older residents have a level footing with technologists and make a genuine contribution to a digital project. The end result as well will have

We will work with technologists to create minimum viable product for serious game, which is a growing genre. In Yorkshire we have GAMAYO (which is a community of 200+ game makers, so we have talent).

The point is to increase the shelf life of ongoing storytelling projects and get these stories and issues to a wider community – i.e. Those playing the game. At the

moment, there is very little visibility of these projects outside of the bubble of participants.

Introducing cutting edge technology to the city

With co-operation with the Neighbourhood Networks and other agencies, we are working on bringing in cutting edge and innovative projects to the city to run pilot projects. Potential projects in the pipeline are RITA (Responsive Interactive Advocate, University of Kent) which is an Avatar project for older people suffering with the early parts of dementia.

The Yecco Pilot

The Yecco project designed to provide elderly residents with new skills and bridge the digital divide tested in Crossgates and District Good Neighbours Scheme as well as allowing clients to self monitor around health conditions is still in the measurement phase. The residents meet once a week, to catch up on how the apps and devices are working and their effectiveness. The pilot phase where results can be measured, by the University of Leeds, will be complete by the end of November.

Future and Challenges

If these proof of concepts turn out to be a success they will inform business cases for scaling to wider cohorts. However, the challenge of scaling and sustaining these as potential commercial products by our innovators and as solutions for our constituents still needs to be addressed. We are talking to partners around how we might do this including business incubators.

This page is intentionally left blank

Get online in Leeds

A guide to free services
in your local area



More and more services, either from your local council or central government will soon only be available online. These include: benefits, pensions, tax payments and even local services like searching and applying for jobs, reserving a book or booking gym times.

To help you prepare for the future changes, Leeds City Council has created this booklet to support you in getting online for free. This guide will help you find a computer and basic IT skills courses in your local area.

Access to a computer and support to get online

Use the key below to find out where you can access free IT skills courses in your local area. Visit or contact services directly, for details of computer availability and courses.



These centres can provide IT skills training courses. Please contact direct for further details.

ALL LEEDS

Age UK



0113 389 3000 Bradbury Building, Mark Lane, Leeds LS2 8JA

Contact for information about basic computer skills sessions for older people at venues across the city

Get IT Together



07780 480968 Various venues

Contact for an up to date programme as venues and dates change regularly

The HUGO project



0113 386 1000/0113 378 1338, email hugo@lfha.co.uk,
www.facebook.com/thehugofamily, www.twitter.com/theHugoFamily

Two mobile buses providing free wifi, help to get online and computer courses across the city

Mobile Library provision

Contact the Enquiry Express line on **0113 247 6016** for days/times of all the mobile stops, various locations and dates across the city providing access to a computer

ADEL AND WHARFEDALE

Holt Park Library

0113 336 8188 Holt Park Community Library, Holtdale Approach, Leeds LS16 7RX
Mon 10am-8pm, Tue 9am-5pm, Wed 9am-8pm, Thu 9am-5pm, Fri 9am-5pm,
Sat 9am-4pm

ALWOODLEY

Housing Leeds

Peter Evans 0113 247 6101 Partnerships Team, Tribeca House, 71 Roundhay Road, Leeds LS7 3BE

Courses are for tenants of Housing Leeds in the East North East area – City and Guilds Level 3 in Online Basics

Moor Allerton Library

0113 378 1881 Moor Allerton Library, 2 Moor Allerton Centre, Leeds LS17 5NY
Mon 10am-7.30pm, Tue 9.30am-7.30pm, Wed 9.30am-7.30pm, Thu 10am-7.30pm,
Fri 9.30am-7.30pm, Sat 9.30am-4pm, Sun 11am-3pm

ARDSLEY AND ROBIN HOOD

Ardsley & Tingley Children's Centre

0113 252 6586 c/o Blackgates School, Smithy Lane, Tingley, Wakefield WF3 1QQ
Contact for details

Ardsley & Tingley Library

0113 253 9025 Ardsley and Tingley Library, 213A Bradford Road, Leeds WF3 2DL
Mon 10am-5pm, Wed 10am-6pm, Fri 10am-1pm, Sat 10am-1pm

ARMLEY

Armley Jobshop

0113 395 7377 Armley Community Hub, 2 Stocks Hill, Armley, Leeds LS12 1UQ
Computer access for job search use only Mon to Fri 9am-4pm

Armley Library

0113 395 1010 Armley Library, 2 Stocks Hill, Leeds LS12 1UQ
Mon 10am-7pm, Tue 9am-7pm, Wed 9am-7pm, Thu 9am-7pm, Fri 9am-7pm,
Sat 10am-4pm

Leeds City College at Strawberry Lane Community Centre



Sue Vickers 0113 216 2281 Strawberry Lane, Leeds LS12 1SF

Contact for information on IT skills courses

Meeting Point



0113 279 6700 Christ Church, Armley Ridge Rd, Armley, LS12 3LE

Drop in for under 18s only, classes available for groups but booking required (all ages), contact for details

New Wortley Community Centre

Bill Graham 0113 279 3466 40 Tong Road, Leeds LS12 1LZ

Public access Mon to Fri 8.30am-2.30pm

BEESTON AND HOLBECK

Beeston Library



0113 378 1849 Beeston Library, Town Street, Leeds LS11 8PN

Mon 10am-6pm, Tue 10am-6pm, Wed 10am-7pm, Thu 10am-6pm, Fri 10am-7pm
Sat 10am-3pm, Sun 12pm-3pm

Canopy – Beeston

0113 294 6868 114 Ladypit Lane, Leeds LS11 6EE

Mon to Fri 8.30am-4.30pm, computer use for Canopy tenants and volunteers only

Cottingley Community Centre

Richard Jones 01133782653 Cottingley Drive, Cottingley, Leeds LS11 0JP

Fri 10am-12pm drop in session, four laptop computers available

Hit Base, St Luke's Cares



0113 271 0766 St Luke's Church Malvern Road Beeston Leeds LS11 8PD

Free IT suite drop in Tue 9.30am-12pm, Wed 9.30am-3pm, various structured classes at different times

Leeds Housing Concern

0113 277 8883 236 Dewsbury Road, Leeds LS11 6ER

Mon to Fri 9am-4.30pm

The Point – White Rose Centre

0113 277 6124 Dewsbury Road, Leeds LS11 8LU

Mon to Fri 9am-4pm

BRAMLEY AND STANNINGLEY

Bramley Children's Centre

Angela Inskip 0113 256 6354 Fairfield Street, Bramley, LS13 3DT

Mon to Fri 8am-6pm, always call first to check availability of the room as it may be already booked

Bramley Elderly Action

0113 236 1644 230A Stanningley Rd, Leeds LS13 3BA

Computers available for members on a drop in basis Mon to Fri

Bramley Library



0113 278 1851 Bramley Library, Hough Lane, Leeds LS13 3ND

Mon 10am-7pm, Tue 10am-6pm, Wed 10am-7pm, Thu 10am-6pm, Fri 10am-6pm, Sat 10am-3pm, Sun 12pm-3pm

Fairfields Community Centre



Ben Williams 0113 255 5759 Fairfield Terrace, Bramley, Leeds LS13 3DQ

Public access Mon to Thu 8.30am-4pm, Fri 8.30am-2pm

Beginners IT/getting online courses Thu 1pm-3pm, please call to book a place

Housing Leeds, Bramley Housing Office

Bramley Area Office, 202 Town Street, Bramley, Leeds LS13 2EP

Public access, drop in, Mon, Tue, Thu, Fri 8.30am-4pm, Wed 8.30am-3pm

Learn Direct Bramley (In2 Work)



0113 880 0979 In2 Work Bramley, Suite 3/3A The Exchange, 471 Stanningley Road, Bramley, LS13 4AP

Level 1 and 2 European Computer Driving Licence (EDCL) classes

BURMANTOFTS AND RICHMOND HILL

Burmantofts senior Action

0113 248 9191 25 Shakespeare Close, Leeds LS9 7UQ

Contact for details

East Leeds Health for All



0113 248 4880 Boston Towers, Lincoln Green, LS9 7PB

Tue & Thu 10am-12pm drop-in, Tue 2pm-4pm computer class

Ebor Gardens Advice Centre

0113 235 0276 173 Haslewood Drive, Burmantofts, LS9 7RE

Mon to Fri 9am-3pm, Wed 10am-12pm drop-in

Ebor Gardens Community Centre

0113 235 0913 Haslewood Drive, Burmantofts, LS9 7PY

Mon to Fri 9am-8pm, contact for more information

GATE (Gypsy & Traveller Exchange)

0113 240 2444 169 Cross Green Lane, LS9 0BD

Mon to Fri 9am-4pm

Housing Leeds



Peter Evans 0113 247 6101 Partnerships Team, Tribeca House, 71 Roundhay Road, Leeds LS7 3BE

Courses are for tenants of Housing Leeds in the East North East area – City and Guilds Level 3 in Online Basics

Housing Leeds

Burmantofts Housing Office, Rigton Lawn, LS9 7QA

Mon & Tue 8.30am-4.30pm, Wed 8.30am-3pm, Thu & Fri 8.30am-4.30pm,
One computer for tenants only

Housing Leeds

Richmond Hill Housing Office, 8 Walter Crescent, LS9 8NG

Mon & Wed 8.30am-12.30pm, Thu 1pm-4pm

Leeds Refugee Forum



0113 244 9600 One Community Centre, Cromwell Street, Lincoln Green, LS9 7SG

Mon to Fri 10am-12.30pm

IT class for beginners Thu 1.30pm-3.30pm

Richmond Hill Community Centre

0113 224 3849 Long Close Lane, Richmond Hill, LS9 8NP

Mon to Fri 9am-4pm, contact for more information

St Vincent's Support Centre

0113 248 4126 82 York Road, LS9 9AA

Mon, Tues and Thu 10.30am-12pm, free IT classes



CALVERLEY AND FARSLEY

Calverley Library

0113 314 6043 Calverley Library, 15 Thornhill Street, Leeds LS28 5PD

Mon 1pm-6pm, Tue 10am-6pm, Thu 10am-6pm, Sat 10am-3pm, Sun 11am-3pm



Farsley Library

0113 378 1861 Farsley Library, Old Road, Leeds LS28 5DH

Mon 10am-7pm, Wed 10am-7pm, Fri 10am-7pm, Sat 10am-1pm



CHAPEL ALLERTON

Chapelton Library

0113 336 7683 The Reginald Centre, 263 Chapelton Road, Leeds LS7 3EX

Mon 11am-6pm, Tue 12pm-7pm, Wed 11am-6pm, Fri 11am-6pm, Sat 11am-1pm



Chapel Allerton Library

0113 378 1859 Chapel Allerton Library, 106 Harrogate Road, Leeds LS7 4LZ

Mon 10am-7pm, Tue 10am-5pm, Wed 10am-7pm, Thu 10am-5pm, Fri 10am-6pm, Sat 10am-3pm



Education Achievement Academy

0113 262 7171 1st Floor Dyson Buildings, Buslingthorpe Lane, Leeds LS7 2DG

Tue 6.30pm-8.30pm, Wed 2pm-4pm, Thu 2pm-4pm, contact for details



Housing Leeds

Peter Evans 0113 247 6101 Partnerships Team, Tribeca House, 71 Roundhay Road, Leeds LS7 3BE

Courses are for tenants of Housing Leeds in the East North East area – City and Guilds Level 3 in Online Basics



LATCH (Leeds Action to Create Homes)

0113 237 4482 176 Chapeltown Rd, Chapel Allerton, Leeds LS7 4HP

Mon to Fri 9.30am-4.30pm, computer use for Latch tenants only

Leeds Media Centre

Bill Lawrie Call 0845 5196150 21 Saville Mount, Leeds LS7 3HZ

Mon to Fri 9am-5pm

The Reginald Centre

263 Chapeltown Road, Leeds LS7 3EX

Mon to Fri 8.30am-5pm, Sat 11am-1pm, by appointment only

Reginald Centre Jobshop

0113 336 7649 263 Chapeltown Road, Leeds LS7 3EX

Computer access for job search use only Mon to Fri 9am-4pm

Unity Housing Association

0113 200 7700 117 Chapeltown Rd Leeds LS7 3HY

Untangling the Web Project, contact for details



CITY AND HUNSLET

ASHA Neighbourhood Project

0113 270 4600 43 Stratford Street Leeds LS11 6JG

Mon to Thu 9am-5pm, Fri 9am-4.30pm, call to arrange an appointment as the room might be booked



BS&D (Leeds Central) Learn Direct

Mike Gomersal 0113 243 3953 50a Upper Balcony, Merrion Centre, Leeds LS2 8DB

Work club every Wed 9am-12pm, call to arrange an appointment – ECDL Level 1 & 2 courses



Central Library

0113 247 6016 Central Library, Calverley Street, Leeds LS1 3AA

Mon, Tue, Wed 9am-8pm, Thu, Fri 9am-5pm, Sat 10am-5pm, Sun 1pm-5pm



City College Beeston Centre



0113 284 6680 Burton Avenue, Beeston, Leeds LS11 5ER

Computers for Beginners, Entry 3, Thu 9.30am-12pm, flexible start
Clueless About Computers, contact for details

Dewsbury Road Job Shop

190 Dewsbury Road, Leeds, LS11 6PF

Computer access for job search use only Mon & Thu 9am-4pm, Wed 9am-3pm

Dewsbury Road Library



0113 395 1581 Dewsbury Road Library, 190 Dewsbury Road, Leeds LS11 6PF

Mon 10am-7pm, Wed 10am-7pm, Fri 10am-7pm, Sat 10am-1pm

Dewsbury Road One Stop Centre

190 Dewsbury Road, Leeds, LS11 6PF

Mon & Tue 8.30am-4pm, Wed 8.30am-3pm, Thu & Fri 8.30am-5pm

Great George Street

2 Great George Street, Leeds LS2 8BA

Mon to Thu 8.30am-5pm, Fri 9.30am-5pm

Great George Street Jobshop

0113 247 6937 2 Great George Street, Leeds LS2 8BA

Computer access for job search use only Mon to Thu 8.30am-5pm, Fri 9.30am-5pm

Hamara Healthy Living Centre

0113 277 3330 Tempest Rd Leeds LS11 6RD

Mon to Fri, booking only

Housing Leeds

0113 378 2653 Navigation House, 8 George Mann Road, Hunslet, Leeds LS10 1DJ

Contact for information on online services

Hunslet Children's Centre

0113 270 7001 Whitfield Avenue, Hunslet, Leeds LS10 2QE

Tue 12pm- 6pm, Thu & Fri 8am-6pm depending on room availability

Hunslet Children's Centre

0113 214 1865 St Mary's Primary School, Church Street, Leeds LS10 2QY

Mon to Fri 8.30am-11.30am and 12.15pm-3.15pm, booking required

Hunslet Jobshop

0113 378 1445 Hunslet Library, Waterloo Road, Leeds LS10 2NS

Computer access for job search use only Mon to Fri 9am-4pm

Hunslet Library



0113 378 1875 Hunslet Library, Waterloo Road, Leeds LS10 2NS

Mon 1pm-6pm, Tue 10am-6pm, Thu 10am-6pm, Sat 10am-3pm, Sun 11am-3pm

Job Centre Plus, Eastgate

0345 6043719 35 Eastgate, Leeds LS2 7RE

Job Centre Plus customers can be booked into a diary to use this facility with help from a member of staff. They can also be used on an adhoc basis dependent on the customer's needs

Job Centre Plus, Park Place

0345 6043719 21-22 Park Place, Leeds LS1 2SL

Job Centre Plus customers can be booked into a diary to use this facility with help from a member of staff. They can also be used on an adhoc basis dependent on the customer's needs

Job Centre Plus, South Leeds

0345 6043719 63 Whitfield Gardens, Leeds LS10 2QD

Job Centre Plus customers can be booked into a diary to use this facility with help from a member of staff. They can also be used on an adhoc basis dependent on the customer's needs

Learndirect Hunslet (in2wrk)

0113 880 8626 Unit 2, Ground Floor, Linden House, Sardinia Street, Hunslet, Leeds LS10 1BH

Contact for details

Leeds Tenants Federation

0113 378 3007 3rd Floor, Westminster Buildings, 31 New York St, LS2 7DT

Mon to Fri 10am-3pm, by appointment only

Leonardo Building

2 Rossington Street, Leeds LS2 8HD

Contact for details

Nari Ekta Ltd



0113 243 4023 Fairfax House, Lower Ground Floor, Merrion St, LS2 8JU

Mon to Fri 9am-5pm, contact for details

St Anne's Community Services



0113 243 1894 St Anne's Resource Centre, 66 York Street, LS9 8AA

Continuous classes, contact for days and times as they vary

Technology campus



0113 386 1997 Technology Campus, Cookridge Street, Leeds LS2 8BL

Contact for information on IT skills courses

Vera Ltd

07957 152107 Asha Centre, Leeds 11

Computers in Everyday Life, free women only classes if in receipt of some benefits, contact for more information

Workers' Educational Association – Leeds



0113 245 3304/0113 200 1173 direct line Suite 10b Josephs Well, Hanover Walk, LS3 1AB

Contact for details

CROSS GATES AND WHINMOOR

Crossgates & District Good Neighbours Scheme

0113 260 6565 St Theresa's Complex, Station Rd, Cross Gates, LS15 7JY

Mon & Wed 9am-4.30pm

Crossgates Library



0113 224 3328 Crossgates Library, Farm Road, Leeds LS15 7LB

Mon 10am-7pm, Tue 9am-7pm, Wed 9am-7pm, Thu 9am-7pm, Fri 9am-7pm,
Sat 10am-4pm

Swarcliffe Good Neighbours Scheme

0113 232 6910 St Gregory's Youth & Adult Centre, Stanks Gardens, Swarcliffe,
LS15 5LS

Thu 11am-1pm

Whinmoor Library



0113 214 4159 Whinmoor Library, Naburn Approach, Leeds LS14 2DF

Tue 1pm-6pm, Thu 9am-12pm, Fri 1pm-6pm, Sat 10am-12pm

FARNLEY AND WORTLEY

Armley Junior's Project 4 Young People



Carol Lockwood 0113 263 6104 26 Heights Drive, Wortley, Leeds LS12 3SU

Computers available on a drop in basis Mon to Fri 10am-2pm

Free beginners computer courses available. Please call to check dates for courses/
book a place on a course

Cow Close Community Corner



0113 345 0912 4 Whincover Drive, Farnley, Leeds LS12 5JG

Computers available on a drop in basis Mon, Tue, Wed and Fri 9.30am-2pm

Free beginners computer courses available. Please call to check dates for courses/
book a place on a course

GARFORTH AND SWILLINGTON

Garforth Library



0113 224 3291 Garforth Library, Lidgett Lane, Garforth, Leeds LS25 1EH

Mon 9am-7pm, Tue 9am-7pm, Wed 9am-7pm, Thu 9am-7pm, Fri 9am-7pm,
Sat 10am-4pm, Sun 12pm-4pm

GIPTON AND HAREHILLS

Archway Resource Centre

0113 383 3900 95 Roundhay Road, Leeds LS8 5AQ

Mon 2pm-6pm, Tue 2pm-8pm, Thu 2pm-7pm, Fri 2pm-5pm

Bangladeshi Community Education Training Centre

0113 277 8224 Roundhay Road, Leeds LS8 4HS

Contact for details

Canopy – Harehills

0113 217 7707 41 Bellbrook Place, LS9 6AR

Mon to Fri 8.30am-4.30pm

Compton Centre

Harehills Lane, Leeds LS9 7BG

Mon, Tue, Thu, Fri 8.30am-4pm, Wed 8.30am-3pm, Sat 10am-1.30pm

Compton Jobshop

0113 336 7822 The Compton Centre, Harehills Lane, Leeds LS8 5AN

Computer access for job search use only Mon to Fri 9am-4pm

Compton Road Library



0113 336 7790 The Compton Centre, Harehills Lane, Leeds LS9 7BG

Mon 9am-7pm, Tue 9am-7pm, Wed 9am-7pm, Thu 9am-7pm, Fri 9am-7pm,
Sat 10am-4pm, Sun 12pm-4pm

Connect Housing Association

0300 5000 600 205 Roundhay Road, Leeds LS8 4HS

Mon, Tue, Thu 9am-5.30pm, Wed 10.30am-5.30pm, Fri 9am-5pm

One computer for tenants only

Echo Centre



0113 249 7762 Conway Road. Leeds LS8 5JH

Mon, Tue, Thu, Fri 9am-4pm (women only), Wed (everyone)

GIPSIL Office

0113 248 1813 1 Woodfield Court, Leeds LS8 3NT

Mon to Fri 9am-4.30pm

Gipton North Children's Centre

0113 240 5168 Thorn Walk, Gipton, Leeds LS8 3LP

Mon & Tue 2pm-4pm

Gipton South Children's Centre

0113 240 5525 Coldcoates Grove, Leeds LS9 6QJ

Thu 1pm-3pm

Housing Leeds

Gipton Housing Office, 58 Coldcotes Drive, LS9 6QG

Mon to Fri 8.30am-4.30pm, closes at 3pm on Wed, one computer for tenants only

Housing Leeds

Peter Evans 0113 247 6101 Partnerships Team, Tribeca House, 71 Roundhay Road, Leeds LS7 3BE

Courses are for tenants of Housing Leeds in the East North East area – City and Guilds Level 3 in Online Basics

Job Centre Plus, Southern House

0345 6043719 Southern House, 529 York Road, Leeds LS9 6TF

Job Centre Plus customers can be booked into a diary to use this facility with help from a member of staff. They can also be used on an adhoc basis dependent on the customer's needs

Shantona Women's Centre

0113 249 7120 c/o Bangladeshi community Centre, Roundhay Road, LS8 5AN

Free women only classes for all ages

Vera Ltd

07957 152107 The Hub, Hovingham Avenue, Leeds LS8 3PY

Computers in Everyday Life, free women only classes if in receipt of some benefits, contact for more information

GUISELEY AND RAWDON

Guseley Library



01943 872675 Guseley Library, Otley Road, Leeds LS20 8AH

Mon 9am-5pm, Tue 9am-7pm, Thu 9am-7pm, Fri 9am-5pm, Sat 9am-2pm

Job Centre Plus Guseley

0345 6043719 Alva House, Otley Road, Guseley, Leeds LS20 8AF

Job Centre Plus customers can be booked into a diary to use this facility with help from a member of staff. They can also be used on an adhoc basis dependent on the customer's needs

HAREWOOD

Housing Leeds



Peter Evans 0113 247 6101 Partnerships Team, Tribeca House, 71 Roundhay Road, Leeds LS7 3BE

Courses are for tenants of Housing Leeds in the East North East area – City and Guilds Level 3 in Online Basics

Scholes Library



0113 214 1319 Scholes Library, 3 Station Road, Leeds LS15 4BJ

Mon 2pm-6pm, Wed 9am-1pm, Fri 2pm-6pm, Sat 10am-1pm

HEADINGLEY

Cardigan Centre



0113 275 9282 145-149 Cardigan Road, LS6 1LJ

Contact for details

Headingley Library



0113 378 1868 Headingley Library, 8 North Lane, Leeds LS6 3HG

Mon 9am-7pm, Tue 9am-7pm Wed 9am-7pm, Thu 9am-7pm, Fri 9am-7pm, Sat 10am-4pm, Sun 12pm-4pm

HORSFORTH

Horsforth Library



0113 378 1872 Horsforth Library, Town Street, Leeds LS18 5BL

Mon 10am-7pm, Tue 9am-5pm, Wed 9am-7pm, Thu 9am-5pm, Fri 9am-7pm, Sat 10am-4pm, Sun 12pm-4pm

HYDE PARK AND WOODHOUSE

Burley Library



0113 214 4528 Burley Library, 230 Cardigan Road, Leeds LS6 1QL
Mon 2pm-7pm, Wed 10am-6pm, Fri 2pm-7pm, Sat 10am-1pm

Burley Lodge Centre

0113 275 4142 42-46 Burley Lodge Road, LS6 1QF
Available for hire Mon to Fri

Kaba-C (CIC) Cyber Café

0113 350 2007/07968 355163 66 Burley Lodge Road, Leeds LS6 1QF
Mon, Tue, Wed 10am-4pm

Leeds Federated Housing Association



0113 386 1000 Arthington House, 30 Westfield Road, Leeds LS3 1DE
The HUGO Centre, training and internet access Mon to Fri 9am-5pm. Just drop in for access to the internet

Oblong



0113 245 9610 Woodhouse Community Centre, 197 Woodhouse St, LS6 2NY
Mon to Fri 9am-4pm

Park Lane Campus



0113 386 1997 Park Lane, Leeds LS3 1AA
Contact for information on IT skills courses

Quarry Mount Children's Centre

0113 378 2555 Quarry Street, Woodhouse, Leeds LS6 2JU
Mon to Fri 8am-6pm, call to check availability

KILLINGBECK AND SEACROFT

City College, Deacon House



Nigel Wilkes 0113 308 7923 Seacroft Avenue, Leeds LS14 6JD
Computer workshops, Clueless About Computers, ITQ Level 1 & 2, contact for details

Housing Leeds

Peter Evans 0113 247 6101 Partnerships Team, Tribeca House, 71 Roundhay Road, Leeds LS7 3BE

Courses are for tenants of Housing Leeds in the East North East area - City and Guilds Level 3 in Online Basics

Job Centre Plus, Seacroft

0345 6043719 Parkway House, North Parkway, Seacroft, Leeds LS14 6UZ

Job Centre Plus customers can be booked into a diary to use this facility with help from a member of staff. They can also be used on an adhoc basis dependent on the customer's needs

Jobshop session at Seacroft North Housing Office

0113 378 1445 Seacroft North Housing Office, Seacroft Green, Seacroft, Leeds LS14 6PA

Computer access for job search use only – One session per week contact for details

LS14 Trust

0113 318 0522 45 Ramshead Hill, Seacroft, LS14 1BT

Mon to Wed 10.30am-5pm, Thu booking required

Seacroft Library



0113 378 1902 Seacroft Library, Seacroft Crescent, Leeds LS14 6PA

Mon 10am-7pm, Tue 10am-5pm, Wed 10am-5pm, Thu 10am-5pm, Fri 10am-5pm, Sat 10am-3pm, Sun 12pm-3pm

Seacroft Children's Centre

0113 378 2681 South Parkway, Seacroft, Leeds LS14 6EP

Mon to Fri 8am-5.30pm, please call to check availability of the room

Swarcliffe Children's Centre

0113 378 1816 Langbar Road, Swarcliffe, Leeds LS14 5ER

Mon to Fri 9am-4pm, please call to check availability of the room

KIPPAX AND METHLEY

Kippax Children's Centre

0113 287 6873 Brexdale Avenue, Kippax , Leeds LS25 7EJ

Mon to Fri 8.30am-4pm, booking required

Kippax Library



0113 378 1878 Kippax Library, Westfield Lane, Leeds LS25 7JP

Mon 10am-7pm, Wed 10am-7pm, Fri 10am-7pm, Sat 10am-1pm

Methley Library



01977 515558 Methley Library, Savile Road, Leeds LS26 9HS

Tue 1.30pm-5pm, Wed 5pm-7pm, Fri 1.30pm-5pm, Sat 10am-1pm

Micklefield Youth & Adult Centre

0113 232 0572 The Old Fire Station, Great North Road, Micklefield, LS25 4AF

Youth Club Tue 6pm-8.30pm, Drop in Wed 10am-12pm, History Group Wed 10am-12pm

KIRKSTALL

Hawthorn Children's Centre

0113 259 0173 Broadway, Kirkstall, Leeds LS5 3PS

Mon to Fri, 8am-5pm

MIDDLETON PARK

BITMO'S GATE



0113 378 2190 Aberfield Gate, Off Belle Isle Road, Leeds LS10 3QH

Mon to Fri, 9am-5pm

City College, St George's Centre



0113 386 1997 St. George's Road, Middleton, Leeds LS10 4UZ

Clueless About Computers, contact for details

Design Print



0113 271 7109 10 Middleton Park Mount, LS10 4BB

Help getting online and Microsoft Office Training, open 10.30am-2pm

Health for All (Belle Isle Family Centre)

Leanne Elliott/Inbal Dickinson 0113 277 4819 St John & St Barnabas Church, Belle Isle Road, Leeds LS10 3PG

Mon to Fri, call for times

Health for All (Middleton Family Centre)

Claire Smith 0113 276 2386 256-262 Sissons Road, Middleton, Leeds LS10 4JG

Mon to Fri, call for times

Health for All (Tenants Hall)

0113 270 6903 Tenants Hall Enterprise Centre, Acre Close, Leeds LS10 4HX

Available for hire every day of the week 8am-8pm

Jobshop session at St George's Centre

0113 378 1445 St George's Centre, St George's Road, Middleton, Leeds LS10 4UZ

Computer access for job search use only Mon & Thu 9am-4pm

Middleton Library

0113 224 3119 Middleton Library, St Georges Road, Leeds LS10 4UZ

Mon 1pm-8pm, Tue 9am-5pm, Wed 1pm-5pm, Thu 9am-1pm, Fri 1pm-5pm, Sat 10am-2pm



Middleton Play and Learning Centre

0113 277 5323 Throstle Lane, Leeds LS10 4JD

Mon to Fri 8.30am-4.30pm, booking required

Nesfield Family Resource Centre

0113 270 3868 Nesfield View, Leeds LS10 3LA

Mon to Fri 8.30am-4pm

South Leeds Youth Hub

0113 336 7773 Middleton Road, Belle Isle, Leeds LS10 3JA

Mon to Fri 8am-9pm, Sat 10am-1pm

Trinity Network

0113 270 3935 Nesfield Road, Leeds LS10 3LG

Contact for details

MOORTOWN

Housing Leeds

Moortown Housing Office, 4 Queenshill Approach, LS17 6AY

Mon to Fri 8.30am-4.30pm, closes at 3pm on Wed, one computer for tenants only

Housing Leeds



Peter Evans 0113 247 6101 Partnerships Team, Tribeca House, 71 Roundhay Road, Leeds LS7 3BE

Courses are for tenants of Housing Leeds in the East North East area – City and Guilds Level 3 in Online Basics

Marjory and Arnold Ziff Community Centre



0113 268 4211 311 Stonegate Road, Leeds LS17 6AZ

Beginners' class Mon 2pm-4pm

Northcall Community Centre



0113 268 9993 53-55 Cranmer Bank, LS17 5JD

Mon, Tue, Thu, Fri 9am-2pm drop in IT + a class on a Tue 10am-12pm

Stainbeck Church

0113 293 5847 Stainbeck Church, Stainbeck Road, Leeds LS7 2PP

Thu 11am-2pm

MORLEY NORTH

Gildersome Library & Meeting Hall



0113 214 5422 Library & Meeting Hall, Town Street, Leeds LS27 7AB

Mon 2pm-7pm, Wed 10am-5pm, Fri 10am-5pm, Sat 10am-12pm

MORLEY SOUTH

City College, Joseph Priestley Campus, Morley



0113 284 6640 Peel Street, Morley, Leeds LS27 8QE

Clueless About Computers, Entry Award in Computing and ITQ Level 1 Award, contact for details

Job Centre Plus, Morley

0345 6043719 Highpoint House, 88 Queen Street, Morley, Leeds LS27 9EB

Job Centre Plus customers can be booked into a diary to use this facility with help from a member of staff. They can also be used on an adhoc basis dependent on the customer's needs

Morley Library



0113 378 1887 Morley Library, Commercial Street, Leeds LS27 8HZ

Mon 10am-7pm, Tue 9am-6pm, Wed 9am-7pm, Thu 9am-6pm, Fri 9am-5pm, Sat 9am-4pm, Sun 12pm-3pm

OTLEY AND YEADON

Otley Library



01943 466572 Otley Library, Nelson Street, Leeds LS21 1QL

Mon 10am-7pm, Tue 9am-7pm, Wed 9am-7pm, Thu 9am-7pm, Fri 9am-7pm, Sat 9am-4pm, Sun 11am-3pm

Otley Town Council

01943 466335 Otley Core Resource Centre, Orchard Gate, Otley, LS21

Public access Mon to Thu 10am-4pm, Fri 10am-3pm

Yeadon Library



0113 378 1909 Yeadon Library, High Street, Leeds LS19 7PP

Mon 10am-8pm, Wed 9am-8pm, Thu 9am-5pm, Fri 9am-5pm, Sat 9am-1pm

PUDSEY

Job Centre Plus, Pudsey

0345 6043719 Century House, Church Lane, Pudsey, Leeds LS28 7RQ

Job Centre Plus customers can be booked into a diary to use this facility with help from a member of staff. They can also be used on an adhoc basis dependent on the customer's needs

Pudsey Library



0113 378 1893 Pudsey Library, 20 Church Lane, Leeds LS28 7TY

Mon 10am-7pm, Tue 9am-6pm, Wed 9am-6pm, Thu 9am-7pm, Fri 9am-5pm, Sat 9am-4pm

ROTHWELL

Fair Exchange

07780 601917

Times to be arranged Mon to Fri, contact for more information

Rothwell Children's Centre

0113 282 2319 Cornwall Crescent, Rothwell, Leeds LS26 0RA

Mon to Fri 8am-6pm

Rothwell Library



0113 224 3288 Rothwell Library, Marsh Street, Leeds LS26 OAE

Mon 9am-7pm, Tue 9am-7pm, Wed 9am-7pm, Thu 9am-7pm, Fri 9am-7pm,
Sat 10am-4pm, Sun 12pm-4pm

Temple Lawn John O Gaunts Community Centre

07403 873006

Contact for details

ROUNDHAY

Housing Leeds



Peter Evans 0113 247 6101 Partnerships Team, Tribeca House, 71 Roundhay Road, Leeds LS7 3BE

Courses are for tenants of Housing Leeds in the East North East area – City and Guilds Level 3 in Online Basics

North East Learning Centre

0113 378 2777 Talbot Avenue, LS17 6SF

IT suite used by schools but can be rented out by community groups subject to availability

Oakwood Library



0113 378 1890 Oakwood Library, 1 Oakwood Lane, Leeds LS8 2PZ

Mon 10am-7pm, Tue 12pm-6pm, Wed 10am-7pm, Thu 10am-6pm, Fri 10am-6pm,
Sat 10am-3pm

TEMPLE NEWSAM

The City of Leeds YMCA



0113 261 2484 Osmondthorpe One Stop Centre, Wykebeck Mount, LS9 0JE
Classes available, contact for more information

Halton Library



0113 378 1865 Halton Library, 273 Selby Road, Leeds LS15 7UR
Mon 9am-7pm, Tue 9am-5pm, Wed 9am-5pm, Thu 9am-5pm, Fri 9am-5pm,
Sat 10am-3pm, Sun 12pm-3pm

Housing Leeds



Peter Evans 0113 247 6101 Partnerships Team, Tribeca House, 71 Roundhay Road, Leeds LS7 3BE
Courses are for tenants of Housing Leeds in the East North East area – City and Guilds Level 3 in Online Basics

WEETWOOD

None

WETHERBY

Boston Spa Library



01937 845239 Boston Spa Library, High Street, Leeds LS23 6BH
Mon 10am-5pm, Wed 10am-6pm, Fri 10am-1pm, Sat 10am-1pm

Housing Leeds

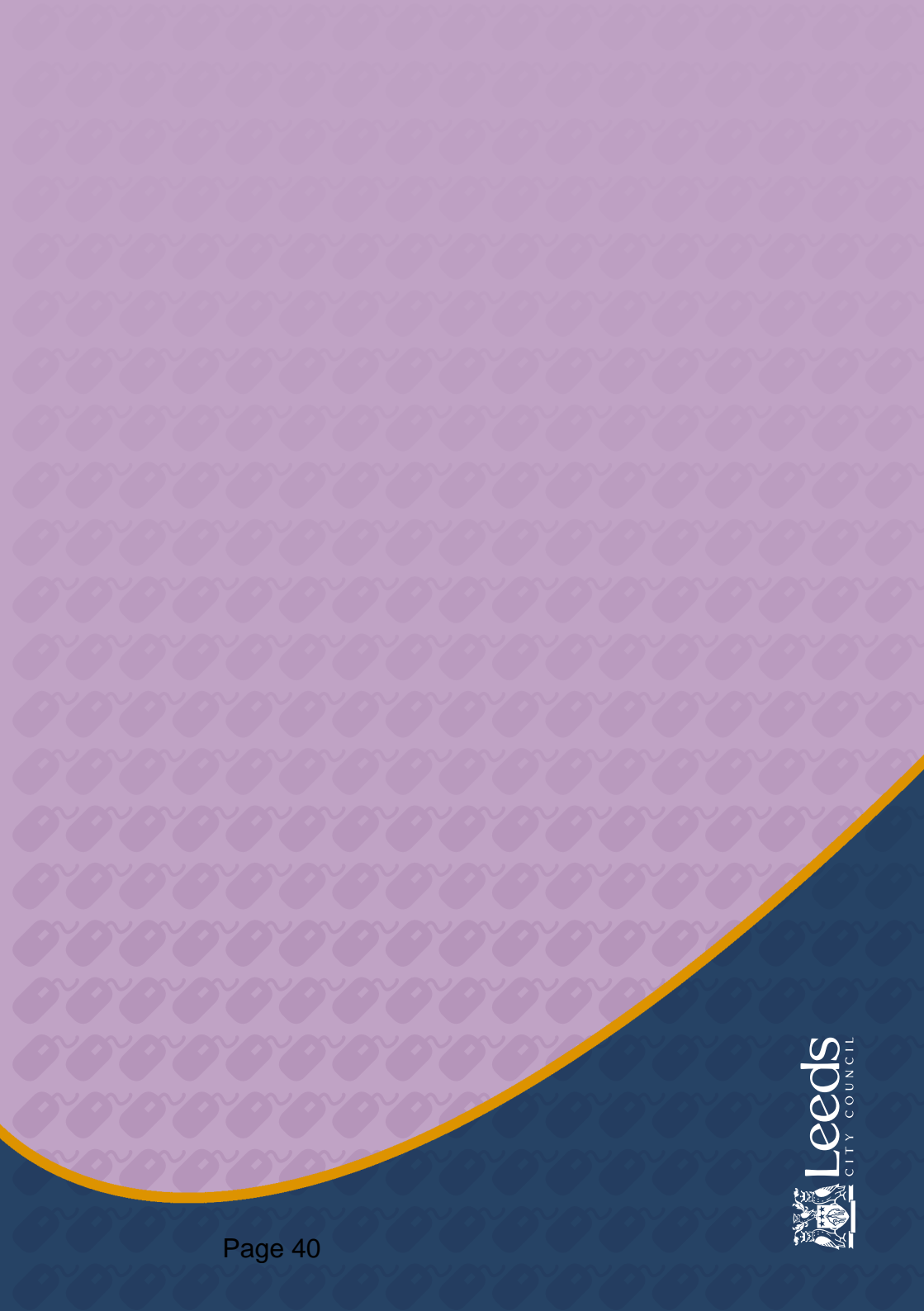


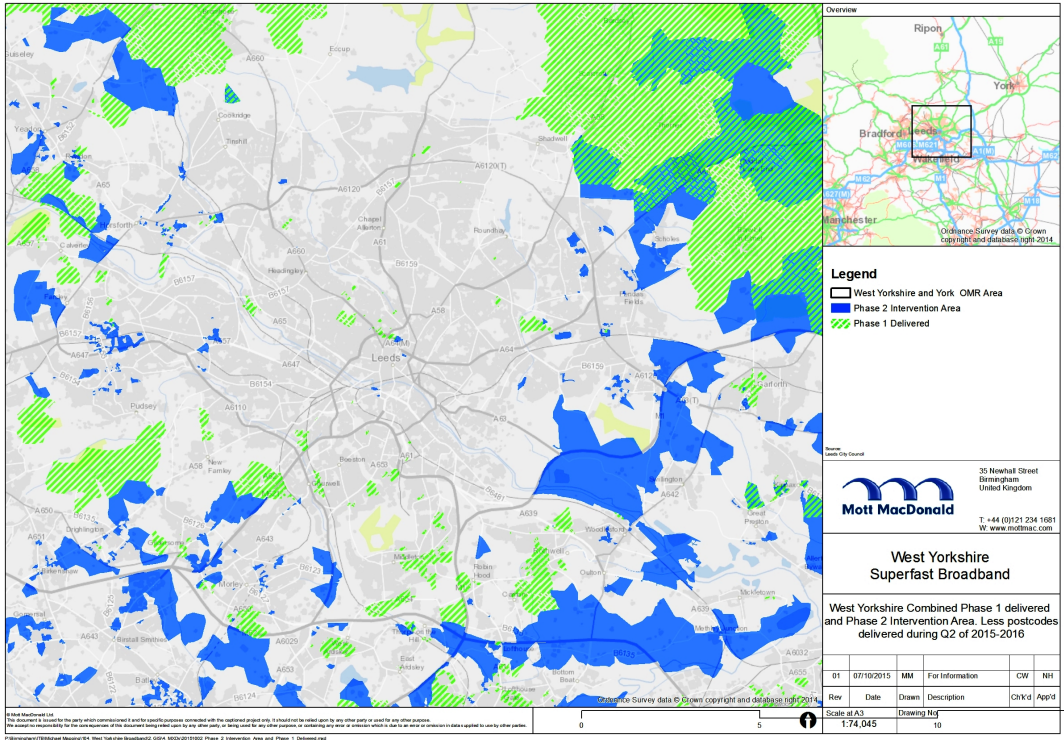
Peter Evans 0113 247 6101 Partnerships Team, Tribeca House, 71 Roundhay Road, Leeds LS7 3BE
Courses are for tenants of Housing Leeds in the East North East area – City and Guilds Level 3 in Online Basics

Wetherby Library

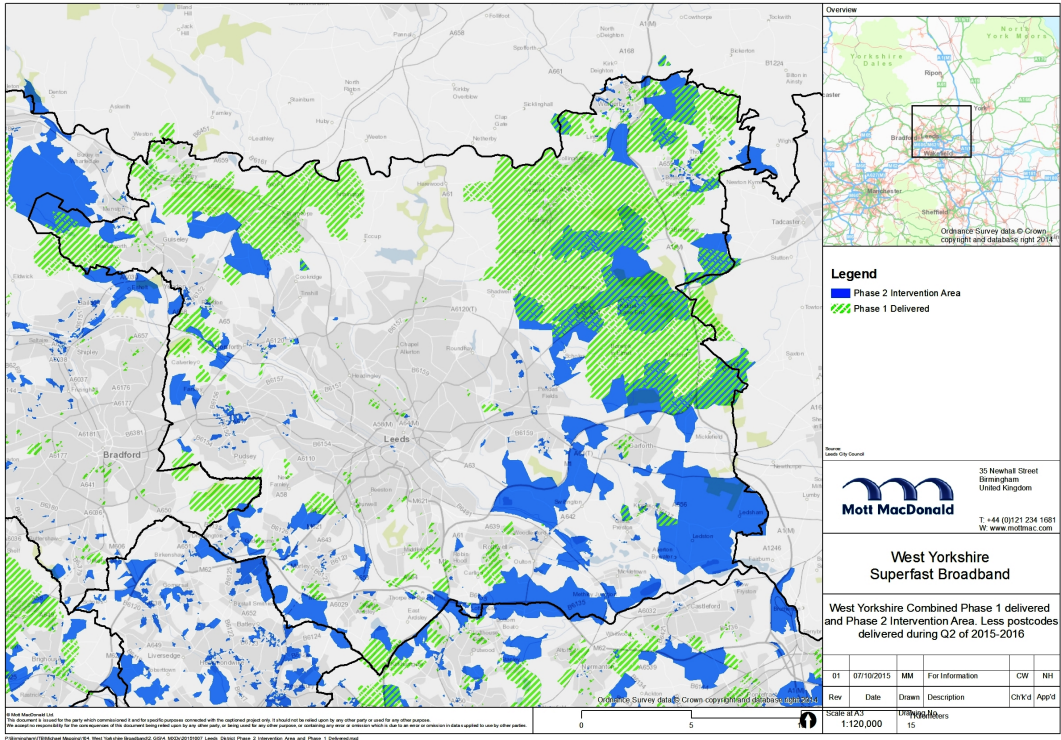


01937 583144 Wetherby Library, 17 Westgate Leeds LS22 6LL
Mon 10am-7pm, Tue 9am-7pm, Wed 9am-7pm, Thu 9am-7pm, Fri 9am-7pm,
Sat 10am-4pm

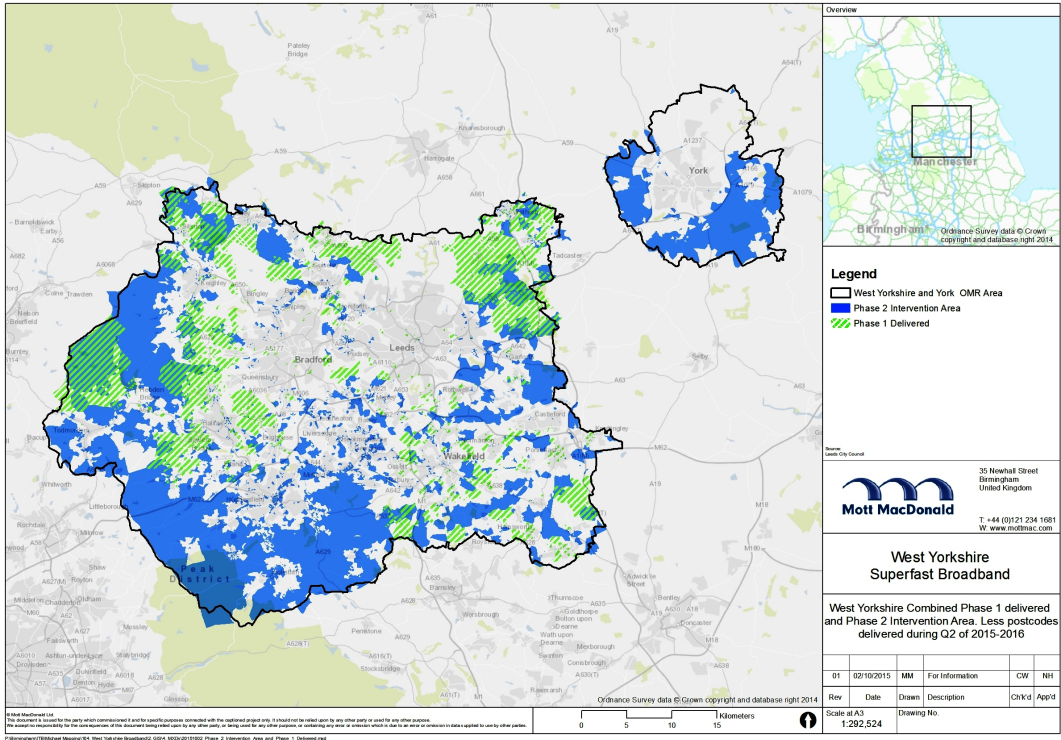




This page is intentionally left blank



This page is intentionally left blank



This page is intentionally left blank

Commons Select Committee – Terms of Reference 27 July 2015

Inquiry into establishing world-class connectivity throughout the UK announced

A key function of the Department of Culture, Media and Sport is to manage the delivery of the superfast broadband programme and improve digital connectivity. It is widely acknowledged that proper digital connectivity plays an essential role in people's family, social and business lives, and in their access to public services.

The Government aims to ensure that superfast broadband is available to 95% of UK premises by the end of 2017. Earlier this year the National Audit Office reported that the Government's programme was on track to meet the revised targets, with superfast broadband likely to reach 90% coverage of premises ahead of December 2016.

The Government has also intervened to improve coverage of mobile networks and Ofcom, the communications regulator, has attached coverage obligations to mobile network operators' licences. Under an agreement last year all four of the main mobile network operators agreed to a £5 billion investment programme to improve mobile infrastructure by 2017.

Extending broadband coverage

The challenge now is extending broadband coverage, including to the hardest-to-reach rural areas and pockets of poor connectivity in inner cities. The remaining 5% (approximately 1.5 million of premises) is dispersed across 70% of the UK's landmass. Approximately 1% (i.e. 20% of the final 5%) is in urban areas. Problems of connectivity and lack of access are frequently made worse by poor mobile services in the affected areas.

There is marked concern both in Parliament and among the general public that many individuals, households and businesses in these areas may never have access to adequate broadband and mobile services, and that is already having a serious impact on them and the communities around them.

Inquiry into coverage, delivery and performance of superfast broadband

In that context, the Culture, Media and Sport Committee launches an inquiry into the coverage, delivery and performance of superfast broadband in the UK, and into progress being made in extending and improving mobile coverage and services. During the course of the inquiry the Committee may also hold regional hearings to learn what challenges exist in different parts of the UK.

The Committee invites written evidence in response to the following questions:

- What role should Government, Ofcom and industry play in extending superfast broadband to hard-to-reach premises?
- Is there sufficient competition in these markets? If not, how can any market failures best be addressed given the investments already made?
- What are the commercial, financial and technical challenges the programme faces in reaching the final 5%? What technologies exist to overcome them? What investment is required, by whom and for what return?
- Given that in practice a Universal Service Obligation could not capture 100% of households, what should a USO for broadband look like?
- What are other countries doing to reach 'not-spots'? How affordable are their solutions?
- Should Government be investing more in research and development into finding innovative solutions to meet the communication needs of remote communities?
- Are BT and other communication companies investing sufficiently themselves in reaching these groups?
- What investment and progress are the mobile network operators making in improving mobile coverage across the UK and enabling a swifter process when users choose to change provider? How could these best be improved?
- How have the existing Government broadband programmes been delivered?

Respondents may of course wish to comment on other aspects relevant to these issues.

Chair's comments

"Proper digital connectivity is key both to the well-being of many communities and to Britain's economic future. Yet many people and businesses are unable to receive the digital access and services they need. This inquiry is designed to find out exactly why that is, and how to fix it."

The status of the inquiry is open. There are as yet no public meeting scheduled.

For the attention of the Chair

DCMS Select Committee

Parliament

30 September 2015

Dear Chair

Culture, Media and Sport Select Committee Superfast Broadband Inquiry Submission

Thank you for the opportunity to provide comments to the DCMS Inquiry into the coverage, delivery and performance of superfast broadband in the UK, and the progress being made in extending and improving mobile coverage and services across the Country.

The West Yorkshire Combined Authority has recently signed a Contract with BT to deliver Phase 2 of the BDUK, Local Authorities and potentially European funded superfast broadband programme, rolling out fibre to the cabinet across West Yorkshire and York. Phase 2 builds on the successful Phase 1 programmes across these areas, which were delivered through strong partnerships between the local authorities and BT.

This response is therefore informed by recent extensive experience gained collectively over the past three years, and which we ourselves took into account in our preparation and procurement of the Phase 2 programme. Detailed responses to the specific questions asked are set out in the attached Appendix 1, but the key points to highlight include:

- There is still an important role for Government in intervening in broadband infrastructure as a market failure continues to exist, and improving broadband connectivity to businesses and households is a critical driver of economic growth, and social and economic inclusion for both urban and rural communities.

- City and town centres need to be recognised as areas with ‘hard to reach’ premises as there are significant numbers of businesses and residents in, for example, Leeds and Bradford City Centres that do not have access to affordable (non-lease line) superfast broadband services; which is hampering business growth and social inclusion.
- It is also critical, not only to tackle social exclusion but also to support activity to re-engage people in the workforce, that broadband access and training support is prioritised for deprived communities and people who are out of work.
- Measuring the success of government policy and the BDUK programme by coverage and speed alone masks significant issues related to broadband infrastructure and the operation of an efficient market for broadband services. Many end users (both residents & businesses) suffer from poor access to superfast broadband and/or a lack of consumer choice – these issues are prevalent in urban as well as rural areas.
- In view of the significant reduction in local available resources, there is a critical need for additional support for local demand stimulation activity to increase business and public awareness and drive take-up and exploitation.
- Devolution of future investment to Combined Authorities / local authorities will provide a more efficient and effective way to focus limited resources and develop innovative solutions, including potential income generating models to support further investments.
- The increasing number of broadband infrastructure and service providers in the industry is having a positive effect on choice and cost reductions for businesses and households, but there are further measures by Government that could be taken to enable greater competition to flourish.

I trust that our comments will be helpful in the considerations of the Select Committee, and we would be pleased to discuss our views and experience with the Committee in person at the Inquiry, should the Committee find this useful. In the meantime if you require any further information or clarity on any points raised in this response, please could you contact Colin.blackburn@westyorks-ca.gov.uk in the first instance.

Yours faithfully

A handwritten signature in black ink, appearing to read 'Ian Gray', with a large, sweeping flourish extending to the right.

Ian Gray
Director of Delivery, West Yorkshire Combined Authority &
Chair of the West Yorkshire and York Broadband Programme Board

WEST YORKSHIRE COMBINED AUTHORITY RESPONSE TO DCMS SELECT COMMITTEE - BROADBAND

What role should Government, Ofcom and industry play in extending superfast broadband to hard-to-reach premises?

1. Government needs to stay involved in this agenda. Improving connectivity to all premises (residential and commercial) is an important driver of economic growth, social and economic inclusion and better quality of life for residents in both urban and rural communities.
2. Connectivity and especially connectivity in cities needs to be recognised as a key part of the Northern Powerhouse agenda. The current position of cities means that businesses based in our economically most significant locations can find their growth ambitions hampered by poor connectivity. Cities should be at the forefront of the UK's drive to create world-class connectivity.
3. Any debate that does not acknowledge the significance of premises in city centres and urban environments in defining hard-to-reach premises will only ever be partial and will fail to tackle this important barrier to economic development. In this respect, we would echo the principle findings of the What Works Centre for Local Economic Growth Review into broadband to support the need for investment to address market failure in urban as well rural areas. See <http://www.whatworksgrowth.org/policies/broadband/>
4. Similarly, in order to not only to tackle social exclusion but also to support activity to re-engage people in the workforce, broadband access and training support needs to be prioritised for deprived communities and people who are out of work.
5. To date extending the availability of superfast broadband has been focused around coverage. Framing success in this way means that the position of premises in city centres and other urban environments can be overlooked. In these locations coverage per se is not necessarily the issue for commercial users. What coverage figures can mask is the fact that in city centre locations there can be very limited choice available to end users. Superfast coverage in city centres is overwhelmingly provided through leased lines. There is little or no FTTC available and businesses (and residents) are therefore very limited in the types of service they can access. There are two groups within businesses in city centre locations;
 - businesses that have identified a requirement for superfast and can afford the increased monthly costs associated with a leased line but are unable to access these products without incurring significant capital installation costs; and
 - businesses which cannot access FTTC superfast products because cabinets have not been upgraded and are unable to pay either the high upfront or enhanced monthly costs associated with either leased line or business grade wireless connections, and so feel 'stuck' with basic broadband connectivity.

6. In these situations there is existing infrastructure (often a complex infrastructure that has been developed in an ad-hoc way over time) but, in our view, an unwillingness to make commercial investments in this infrastructure to bring maximum choice to end users.
7. The Connection Voucher scheme has played a valuable role in enabling superfast access for both sets of customers mentioned above. For customers in the first group vouchers have allowed them to access either a traditional fixed leased line or a business grade wireless connection. For the second group the availability of vouchers has allowed ISPs, particularly wireless providers, to develop products offered with either free or low monthly costs which have allowed businesses a low risk opportunity to explore whether having a superfast connection is valuable to them. Once the initial low cost period expires businesses will have to assess whether they can continue to meet the cost of the connection. In the event that the monthly costs are unaffordable the business is back in the position of having only basic broadband access.
8. As the latter example shows the Connection Voucher scheme, whilst welcome and of value to individual beneficiaries, can only offer a partial solution to city centre issues. Delivering a step change in connectivity to city centres to deliver world class business locations will require a much more ambitious approach which seeks to comprehensively tackle infrastructure issues.
9. Recommendations
 - Government should consider bold interventions which underline its ambitions to build the resilient, future proof infrastructure necessary to drive productivity and growth. Making full fibre to the premises solutions (FTTP) a part of any new build development (commercial and residential) would signal a commitment to ensuring that hard-to-reach premises become a thing of the past. Using the Planning system to place this obligation on developers makes this consideration part of the development process – a far more cost and time efficient way of delivering infrastructure.
 - Government needs to reconsider its approach in city centres. They should consider seeking a new position on State Aid to allow for public sector intervention in city centres. There is market failure in city centre locations where commercial investment in existing infrastructure (to bring FTTC capability to city centre premises in line with premises in the rest of the district) is not happening. City centre issues include prevalence of exchange only lines, costs associated with highways and traffic management issues, way-leaves and permissions from land and property owners.
 - Government should look to support demand stimulation activity such as the Connection Voucher scheme which raise awareness of improved connectivity as a business development tool and incentivise businesses to invest in additional capacity. In the residential context Government should consider supporting demand stimulation activity to maximise the take up, and therefore, impact of the huge public sector investment in physical infrastructure.
 - The Government's commitment to a Universal Service Commitment of 2Mbps, should be delivered but increase to 5Mbps.

- The Government should stimulate the market to deliver and incentivise smaller ISPs to deploy their own solutions to rural areas; also review FTTRN, wireless or satellite solutions and communicate 'best practice' advice through to Local Authorities. BDUK to be the enabler; other providers to be given the opportunity to deliver, not just BT.
- Government and Industry – better Communications/PR to assist with Demand Stimulation. Encourage commercial roll out of 4G to bridge the gap.
- It would be interesting to understand what the economic benefit would be of extending superfast into the harder to reach places and mapping that against the benefit of focusing on more urban areas. Connectivity will become increasingly pivotal to unlocking and securing investment for the Leeds City Region, the influence Government and Ofcom has on industry providers is key to ensuring no one region benefits from a competitive edge over others.

10. The USO shouldn't change. Even 2Mbps as a minimum is not fast enough in 2015.

Is there sufficient competition in these markets? If not, how can any market failures best be addressed given the investments already made?

11. No. Devolve funding to Combined Authorities / local authorities and allow them to roll out infrastructure in line with highways improvements and local strategies offering the opportunity to adopt income generating models.
12. In some urban areas, yes, particularly around the 'quad play' offer for residents. For businesses, no, and for rural residents, no again. In terms of market failure – consider widescale deployment of alternative solutions (more investment may be required). If possible, utilise clawback and capital reinvestment from the BDUK WY projects to procure infrastructure from other providers, not just BT.

What are the commercial, financial and technical challenges the programme faces in reaching the final 5%? What technologies exist to overcome them? What investment is required, by whom and for what return?

13. We should deliver upto 99% coverage by 2019/20 across West Yorkshire and York following the roll-out of our existing Phase 2 programme. It appears likely that the only solution in the remote rural areas within the final 1% will be a satellite solution. However, in city and town centres and some other urban areas which will be still part of the final 1% following completion of Phase 2, the solution could still be fibre to the cabinet if and appropriate State Aid exemption can be negotiated by Government or BT connects the remaining cabinets with fibre through their commercial programme.

Again what is the benefit of the 5% and does the cost represent return on investment. Can we justify public intervention?

14. Would further creative thinking allow us to reduce cost of reaching the remaining 5% and increase the return on investment eg incentivise developers/landowners/investors to improve provision in a similar way to solar power? Not sure if this is possible, just a thought.
- Commercial – BT and Virgin don't want to deliver as it doesn't represent value for money.
 - Financial – Local Authorities don't have the cost or resources in place to facilitate delivery.
 - Technical – Unless the cost of deploying fibre falls dramatically, the technology used will need to reflect some of the alternative solutions – wireless, 4G, 5G... Mobile broadband could be the answer.

Given that in practice a Universal Service Obligation could not capture 100% of households, what should a USO for broadband look like?

15. Any debate about revisiting the USO needs to consider how this obligation is defined. Limiting the discussion to speed alone does not leave room for other important considerations such as;
- Reliability
 - Cost (both of deployment and to the end user)
 - Choice
16. In the context of business users in so called hard to reach premises in the urban environment, choice is an important consideration. As referred to in previous answers, for businesses in city centre environments where there may be little or no FTTC available, current provision may meet or exceed the threshold expected under the USO. However if a business wants to upgrade and increase the capacity of their connection there is no way of doing this other than taking a leased line or a wireless connection if this is possible. For residential users there may be no alternative at all.
17. We echo the sentiments of the Broadband Stakeholder Group (<http://www.broadbanduk.org/2015/09/02/bsg-publishes-new-model-on-small-businesses-connectivity-requirements/#more-2901>) which recommended that Government should work to ensure that all SMEs have access to superfast connectivity. Recent research by Federation of Small Businesses underlines the importance of connectivity to small businesses and calls for a minimum USO of 10 mbps (<http://www.ispreview.co.uk/index.php/2015/09/uk-small-businesses-repeat-demand-for-10mbps-broadband-uso.html>).
18. Notwithstanding the above, we would reiterate our view that speed alone should not be used to define our expectations of broadband infrastructure.
19. The USO shouldn't change. Even 2Mbps as a minimum is not fast enough in 2015.

What are other countries doing to reach 'not-spots'? How affordable are their solutions?

20. Some portable Wi-Fi solutions, with limited success. Other countries have better mobile broadband and in some cases FTTP as standard.
21. Should Government be investing more in research and development into finding innovative solutions to meet the communication needs of remote communities?
22. Is Government best placed to lead on developments within the sector, would this be more suitable to industry leaders/universities? However new solutions will inevitably lead to reducing cost of reaching the 5% so should be encouraged as a priority

Are BT and other communication companies investing sufficiently themselves in reaching these groups?

23. No, as they will argue it isn't commercially viable for them.
24. BT as with any other profit making organisation will concentrate their investment where they will see a return, therefore until the cost of delivery is below the potential return they will continue to ignore the harder to reach areas and 'bump' them down their commercial rollout priority list. Transparency around commercial rollout of all providers is essential to effectively plan 100% coverage and increase speeds in key locations across the LCR.
25. Three issues in play around commercial investment by BT
 - In city centre context there's a feeling that status quo protects the leased line model and therefore there is a reluctance to disrupt that.
 - Capacity issues within BT as an organisation to deliver any additional commercial activity whilst the publicly funded programmes are ongoing. Our experience suggests that BT as currently resourced are focused around planning for BDUK rollout to 2018 and are unable to plan beyond that point in time for either additional funded (ERDF) activity or for their own commercial activity.
 - Relatedly there is a concern that capacity issues within BT may mean that commercial activity that was mapped prior to Phase 1 rural programmes commencing has not happened. BT are under no obligation to complete their commercial programme and therefore some premises will remain untouched. Maps and statements relating to the overall coverage position at end of Phase 1 maybe inaccurate, and these inaccuracies will continue through Phase 2.
26. In city centre locations our experience of running the connection voucher scheme would suggest that there is a cohort of businesses which want superfast provision and are willing to pay the enhanced monthly charges associated with superior connectivity.
27. We have not seen any activity from BT to upgrade the existing infrastructure in the city centres. The feeling is that the status quo protects the leased line model and means that extending choice around connectivity to businesses and residents is limited.
28. Leeds and Bradford welcome BT's announcement of £30m to invest in cities. However this announcement was first made in autumn 2013 and no further details, outside of activity in London, have been announced.

Other investment

29. In Leeds we have seen activity from other providers in the marketplace. We have seen investment in primarily residential buildings (with some commercial buildings as well) by Hyperoptic. We welcome discussions with Virgin around how we can support them in rolling out Project Lightning investment in Leeds and Bradford. In Kirklees CityFibre are beginning an investment in Huddersfield town centre which will provide an alternative infrastructure. CityFibre's work in York is rolling out into residential areas with a joint venture with Sky and Talk Talk to provide residential services.
30. The Connection Voucher scheme has brought about activity from wireless providers who have made investments in developing wireless networks in Leeds and Bradford. Metronet in particular have been active across both cities.

What investment and progress are the mobile network operators making in improving mobile coverage across the UK and enabling a swifter process when users choose to change provider? How could these best be improved?

31. Mobile operators are doing well on the whole and the market is competitive. Switching networks is still a clunky process, perhaps Ofcom could review and suggest improvements.

How have the existing Government broadband programmes been delivered?

32. Superfast West Yorkshire has delivered well when compared to other regions; the Phase 1 project is almost complete and has exceeded its target outputs early and has come in under budget. However it may have been advisable to negotiate a better deal centrally on 'clawback' that could have been adopted across all regions as this has allowed BT to maximize profit disproportionately across the UK.
33. It could be argued that there has been too much reliance on BT which has provided a monopoly for public supported investment. The clawback model perhaps needs to be reviewed so that the clawback funding is not inexplicitly linked to the further investment just in BT delivered activity.
34. Infill, the way of reaching the very-hard-to-reach remains an issue
35. The SuperConnected Cities voucher scheme for businesses has been very successful overall and has benefited thousands of businesses of all sizes. An extension to this scheme would be welcome.
36. Finally, there is a significant problem with the way BDUK projects currently identify those areas where public sector funding can encourage BT to intervene in the market. Postcode level data is used as a basis. Under the existing schemes, postcodes can be ineligible for public sector intervention because of the presence of a single premise classified as superfast grey. e.g. if a postcode contains 100 premises and only 3 of these, say, have access to Virgin broadband, the whole postcode is deemed as ineligible for intervention funding. Consequently the other 97 premises lose out. Clearly this must change.

Central Library	Library
Ardsley & Tingley	Library
Armley	Library
Beeston	Library
Boston Spa	Library
Bramley	Library
Burley	Library
Calverley	Library
Central	Library
Chapel Allerton	Library
Chapelton	Library
Compton Road	Library
Cross Gates	Library
Dewsbury Road	Library
Farsley	Library
Gildersome	Library
Guiseley	Library
Halton	Library
Headingley	Library
Holt Park	Library
Horsforth	Library
Hunslet	Library
Kippax	Library
Methley	Library
Garforth	Library
Otley	Library
Middleton	Library
Moor Allerton	Library
Morley	Library
Oakwood	Library
Pudsey	Library
Rothwell	Library
Scholes	Library
Seacroft	Library
Wetherby	Library
Whinmoor	Library
Yeadon	Library
Boston Spa Children's Centre	Childrens Centre
Wetherby Children's Centre	Childrens Centre
Two Willows Children's Centre	Childrens Centre
Bramley Children's Centre	Childrens Centre
Osmondthorpe Children's Centre	Childrens Centre
Richmond Hill Children's Centre	Childrens Centre
Chapel Allerton Children's Centre	Childrens Centre
Chapelton Children's Centre	Childrens Centre

Meanwood Children's Centre	Childrens Centre
Hunslet Children's Centre	Childrens Centre
Swardcliffe Children's Centre	Childrens Centre
Gipton North Children's Centre	Childrens Centre
Gipton South Children's Centre	Childrens Centre
Shepherds Lane Children's Centre	Childrens Centre
Little London Children's Centre	Childrens Centre
Quarry Mount over 3's Children's Centre	Childrens Centre
Quarry Mount Under 3's Children's Centre	Childrens Centre
Kentmere Children's Centre	Childrens Centre
Seacroft Children's Centre	Childrens Centre
Otley Children's Centre	Childrens Centre
Hawksworth Wood Children's Centre	Childrens Centre
Burley Park Children's Centre	Childrens Centre
Middleton Children's Centre (LCC) Over 3's	Childrens Centre
Middleton Children's Centre (LCC) Play & Learn	Childrens Centre
Rothwell Children's Centre	Childrens Centre
Cottingley Children's Centre /Springwell CC	Childrens Centre
Harehills Children's Centre	Childrens Centre
Bramley Children's Centre under 3's	Childrens Centre
Holt Park	Leisure Centre
Armley	Leisure Centre
Scott-Hall	Leisure Centre
John Smeaton	Leisure Centre
Garforth	Leisure Centre
Fearnville	Leisure Centre
Pudsey	Leisure Centre
Kippax	Leisure Centre
Kirkstall	Leisure Centre
Middleton	Leisure Centre
Rothwell	Leisure Centre
Wetherby	Leisure Centre
John Charles	Leisure Centre
Aireborough	Leisure Centre
Morley	Leisure Centre
Pudsey	Leisure Centre
Armley	One Stop Centre
The Compton Centre	One Stop Centre
St George's Centre	One Stop Centre
Pudsey	One Stop Centre
The Reginald Centre	One Stop Centre
Dewsbury Road	One Stop Centre
Morley	One Stop Centre
No2 Great George Street	One Stop Centre
Osmandthrope	One Stop Centre

South Seacroft	One Stop Centre
North Seacroft	One Stop Centre
Wetherby	One Stop Centre
Garforth	One Stop Centre
Otley	One Stop Centre
Richmond Hill Community Centre	Community Centre
Pudsey Civic Hall	Community Centre
Morley Town Hall	Community Centre
Prince Philip Centre	Community Centre
Nowell Mount	Community Centre
South Pudsey	Community Centre
Armley Lazer Centre	Activity Centre
Herd Farm Activity Centre	Activity Centre
Armley Mills Industrial Museum	Museum/visitor attraction
Abbey House Museum	Museum/visitor attraction
Carriageworks	Museum/visitor attraction
Temple Newsham	Museum/visitor attraction
Lotherton Hall	Museum/visitor attraction
Thwaite Mills Water Mill	Museum/visitor attraction
The Discovery Centre (Leeds City Museum)	Museum/visitor attraction
Leeds Town Hall	Museum/visitor attraction
Leeds City Museum	Museum/visitor attraction
City Centre Art Gallery	Museum/visitor attraction

This page is intentionally left blank



Report author: Cluny Macpherson,
Matthew Sims, John Roles
Tel: 2243184

Report of Chief Officer, Sport and Culture

Report to Scrutiny Board – City Development

Date: 18th November 2015

Subject: Inclusive, accessible and sustainable cultural provision in Leeds

Are specific electoral Wards affected? If relevant, name(s) of Ward(s):	<input type="checkbox"/> Yes	<input checked="" type="checkbox"/> No
Are there implications for equality and diversity and cohesion and integration?	<input checked="" type="checkbox"/> Yes	<input type="checkbox"/> No
Is the decision eligible for Call-In?	<input type="checkbox"/> Yes	<input checked="" type="checkbox"/> No
Does the report contain confidential or exempt information? If relevant, Access to Information Procedure Rule number: Appendix number:	<input type="checkbox"/> Yes	<input checked="" type="checkbox"/> No

Summary of main issues

1. Whilst recognising a broader definition, the scope of this report is the work of the Museums and Galleries Service, the Arts, Events and Venues Service, and the Culture and Sport Development Team. The latter incorporating Leeds Inspired, Breeze and support for the European Capital of Culture bid. These services combined operate on a net subsidy of £9.15m which is 1.75% of the Council's Net Managed Budget.
2. The Council is both a provider and an enabler (through grant) of cultural activity. It also provides the strategic lead for the city. In general the paper focusses on the services which we provide as that is where we have more direct control on the relationship between inclusivity and sustainability. The overall cultural offer in the city is of course far broader incorporating community, voluntary, subsidised, third-sector and commercial activity.
3. Culture contributes strongly to a wide range of educational, social, leisure, health and economic outcomes - often simultaneously. This means communicating overall value is not easily articulated with a simple formula. There is a large and increasing body of evidence of these impacts but nevertheless cultural activity is not something that lends itself easily to a wholly quantitative review.
4. The business model of our services incorporates income earning, cost-neutral and subsidised activity which together aim to create a diverse and accessible offer to residents and visitors.

5. Income comes predominantly from a mixture of ticket sales, grants (incoming) and sponsorship.
6. In a financial climate where all public funding is declining, it is also declining for Culture. This means we have to work harder to be efficient and flexibly and maintain or drive up income and revenue streams as well as having a continued vigilance on the cost base. The report and subsequent discussion can help to inform the council's budget setting process.
7. The report is structured to detail the work of the three service areas as per point 1 above.
8. Overall the high-level briefing outlines the current position in order to stimulate discussion as to whether we have the correct balance to deliver a sustainable service whilst encouraging the highest levels of access and participation. We very much welcome the contribution scrutiny can make to informing and steering the work and can provide more detailed analysis on any particular area or issue at future meetings should this be required.

Recommendations

9. Scrutiny Board members are invited to:
 - 9.1 Comment on the work of the Culture Services
 - 9.2 Comment on the balance between income-earning and accessible activity

1 Purpose of this report

- 1.1 The purpose of this report is to brief Scrutiny Board on the balance between ensuring the Cultural activity is sustainable, and ensuring it is accessible and inclusive.

2 Background information

- 2.1 The **benefits of culture** are complex, incorporating educational, social, leisure, health and economic outcomes - often simultaneously. Arts Council England has commissioned independent research and some of its headline findings are as follows:

Businesses in the UK arts and culture industry generated an aggregate turnover of £12.4 billion in 2011. For every £1 of salary paid by the arts and culture industry, an additional £2.01 is generated in the wider economy through indirect and induced multiplier impacts.

In 2011, 10 million inbound visits to the UK involved engagement with the arts and culture, representing 32 per cent of all visits to the UK and 42 per cent of all inbound tourism-related expenditure.

Research has evidenced that a higher frequency of engagement with arts and culture is generally associated with a higher level of wellbeing. Engagement in structured arts and culture improves the cognitive abilities of children and young people.

Culture and sport volunteers are more likely than average to be involved and influential in their local communities. There is strong evidence that participation in the arts can contribute to community cohesion, reduce social exclusion and isolation, and/or make communities feel safer and stronger.

In Leeds the work of Opera North is an excellent example. As well as giving the city a world class opera company with all the economic benefits (and external funding) that brings, it also operates an extensive educational and outreach programme. The 'In Harmony' project began in Windmill Primary School in the Belle Isle area of South Leeds, in January 2013. Every child in the school participates in up to 3 hours musical activity per week during curriculum time and many children attend Opera North 'After School' music sessions three times a week. At Windmill Primary School, 2015 results in Key Stage 2 SATS exams, taken by 10 and 11 year olds, have increased the percentage of children attaining a Level 4 in Reading from 78% in 2014 to 98.7% in 2015. In Writing, 86.7% achieved Level 4 or above, up from 75.6%, while the results in Maths increased from 73.2% to 93.3% of children attaining Level 4 or above. The achievements at the school will of course be part of a whole-school approach to improvement. Anecdotally staff at the school have been insistent that engagement with parents and families has increased significantly.

- 2.2 Our **Museums and Galleries Service** operates nine venues mainly housed in listed or historic buildings including the City Museum, City Art Gallery, Temple

Newsam House, Lotherton Hall, Abbey House Museum, Kirkstall Abbey, Leeds Industrial Museum at Armley Mills, Thwaite Mills and the Museum Discovery Centre. We care for 1.3m cultural items which we use to inspire, educate, entertain and challenge the people of Leeds and visitors to our city. Amassed over almost 200 years these collections are recognised for their quality and significance with four of the collections Designated by the Government to be of international/national importance. A long standing (1982) partnership with the Henry Moore Foundation has seen the service develop the best collection of 20th Century British sculpture outside of the Tate

- 2.3 Council's priorities are delivered in a variety of ways including: caring for collections of national and international importance, that reflect our industrial heritage and our tradition of creativity, innovation and excellence using these collections to engage Leeds diverse communities, contributing to health and wellbeing, shared heritage, participation in civil society and constructive local identities providing opportunities for people to learn and acquire new skills, including schools and higher education, volunteering, work experience, apprenticeships, teaching and research contributing to local economic prosperity, not just through the visitor economy but as a crucial resource and inspiration for the creative industries through raising the international/national profile of Leeds as a thriving cultural city
- 2.4 The service's national status is further recognised by being one of the few services in England in receipt of Arts Council funding. At £1.59m pa, it is the largest award made in the country. It funds not only 25 staff (in addition to the 134 LCC funded FTEs) but seed funds venue improvements. In essence the Council funds the cost of caring for the collections and buildings, plus the staff to open them to the public. Arts Council funding supports any activity whether exhibitions, community, digital or learning. The loss of Arts Council funding would have a devastating impact on the service's ability to deliver the council's priorities in terms of access and engagement.
- 2.5 In terms of access and inclusion, last year the service attracted a record 1.4m visits which is an increase of over one million during the past ten years. That decade has seen a journey of investment, culture change and reinvention. In terms of access, now 97% of Leeds schools (and 25% of schools in our six neighbouring authorities) have used our education services in the last 4 years. All our sites are Accredited Museums, VAQAS assessed and hold the Sandford quality mark for their educational provision. Our web site attracts 1,641,149 page views and the *My Learning* schools resource web site (which we operate and which includes material from museums, libraries and archives across the country) now has over 400 unique learning resources attracting 929,307 unique users with over 1.1m sessions. On social media we have over 90,000 Twitter followers, 16,000+ Facebook likes, 70,823 views of the 182 films published on our YouTube channel and 40 audio files on audio boom.
- 2.6 Visitor satisfaction levels are very high with overall satisfaction rating of 4.64/5 with 97% of visitors saying they would recommend a visit to their friends and family and 91% say they are likely to visit again in the next two years. Figures vary by site but overall c 69% of our visitors come from Leeds post codes. The Art Gallery is one of the most attended regional art galleries in the UK

- 2.7 We operate a paid internship programme and operate a number of collaborative PhDs as well as an active volunteer programme contributing 10,000 hours last year. Last year our community team worked with 149 different community organisations in 224 different groups over 138 outreach sessions
- 2.8 Leeds Museums performs very well against the Core Cities in the Audit Commission's Value for Money Profiles achieving the least cost per visit of any of the reported cities and being one of only three cities with a spend per head of population that is below £10.
- 2.9 The Museums and Galleries service raises income of £2.8m, half of which is the Major Partner Museum grant from Arts Council England. The rest comes from external grants, trusts and a diverse range of income generation including admission fees, retail, catering, venue hire, image licencing, film locations, weddings, canal boat moorings, ghost nights and a picture library. Service costs are £7.08m (including staffing of £4.3m and premises of £1m) and raises income of £2.8m The service therefore has a net subsidy of £4.28m.
- 2.10 Our **Arts, Events and Venues Service** operates a range of activities with the main objective being to ensure people can both experience and engage in the development of high quality arts provision. This is done through direct delivery or funding others. It is delivered through the arts@leeds funding scheme, and through the management of, and promotions at Leeds Town Hall, The Carriageworks Theatre, Pudsey Civic Hall and outreach activity within and around the City. The Arts and Venues service is split into four distinct areas, each working symbiotically to support each other and deliver the core objectives as follows:

1. Arts Development

- 2.11 The Arts Development Team aims to engage the people of Leeds in cultural activities as participants, creators and as audiences. This is achieved by funding and year-round nurturing of Leeds arts organisations to deliver cultural activities and signposting the public to these opportunities. Programming cultural activities directly with and for the public, such as Breeze International Youth Festival and Light Night and delivering a programme of creative work within the Town Hall comprising exhibitions, events, training days and Town Hall tours.
- 2.12 The Arts@Leeds funding programme offers financial and developmental support to arts organisations working with communities in Leeds. This includes flagship organisations with national and international reputations such as Opera North, West Yorkshire Playhouse, Northern Ballet, Phoenix Dance and Yorkshire Dance, as well as well-respected smaller companies such as DAZL, East Street Arts and Pavilion. Funded organisations work across a huge variety of artforms including visual arts, theatre, music, dance, opera, festivals, literature, film, photography, radio and animation.
- In 14/15 arts@leeds funded 55 organisations who:
- 2.13 offered 18,289 sessions of participatory activity, including workshops, exhibitions, talks and demonstrations, to 95,283 residents of Leeds, with opportunities for participation happening in every ward of the city

- 2.14 attracted 1,374,881 audience members to cultural performances and events happening in Leeds, employing around 3484 freelance Leeds-based artists

The Arts Development team also contributes to major cultural events including Leeds St Patrick's Day Parade, Leeds Irish Festival, the Leeds Chinese Community Association's Chinese New Year celebration and the Jewish Performing Arts Festival, assists numerous community events such as I Love West Leeds Festival, Kirkstall Festival, Hyde Park Unity Day, Leeds Young Film and supports cultural venues including arts@trinity, Otley Courthouse, Seven, Project Space Leeds, Leeds Grand Theatre, West Yorkshire Playhouse, City Varieties and Hyde Park Picture House. The team offers seminars and workshops to assist organisations with obtaining funding.

Light Night

Leeds City Council's annual festival is aimed at showcasing local artist's work, whilst celebrating and promoting the rich diversity and heritage of the city. For just one night, the city's artists, makers and performers get together to transform our familiar streets and buildings in an evening of exhibitions, installations and events. For 2014 the event included 54 events in 16 locations.

- 2.15 In 2014 Light Night celebrated its 10th annual festival with 55 free arts events and 13 street performances on offer in 33 venues across the city centre. Art forms included installations, exhibitions, music, dance, street theatre and light projections. The Centrepiece was Theatre of Illumination on Millennium Square. 83% of audiences rated the quality of events at light Night as 'high' or 'very high'. 85% of audiences said Light Night helped to make Leeds a better place to live. The economic impact of Light Night is estimated at £1.36 million. 50,000 people experienced and saw the city in a new light. At the time of writing the 2015 event was being evaluated.

- 2.16 Breeze International Youth Festival

This 12 day arts festival is aimed at 13-19 year olds with the aim of developing new audiences, providing young people with opportunities to take part and learn, celebrating excellence, signposting to year round activities and listening to young people's voices. This year Breeze Festival worked with 16 different project partners to deliver 15 performances and 17 different workshops during the 12 days of the festival reaching 196 project participants. Events included an Anime Day, comedy workshop and show, live dance and music, theatre in Kirkstall Abbey, an exhibition at PSL, tours of the City Varieties, art activities in the White Rose Centre, photography, storytelling and more. BIYF Live! On Briggate showcased 3 bands and 3 dance groups to an audience of 3000 during the day. BIYF Live! at the Carriageworks Theatre showcased 4 dance groups and 2 musical groups to an audience of 200. In total 210 young people performed at these 2 events from 13 different youth groups.

The total Arts Development service net managed LCC budget is c£3m of which c£2m is the arts@leeds programme. Some of this spend is used to unlock additional financial support such as Light Night which attracted support from both

the Arts Council and Business improvement District. It is evident from monitoring returns that 1,864,525 attended activity supported by the service.

2. Arts Planning

2.17 The Arts Planning Team is based at Leeds Town Hall and is responsible for presenting a wide range of arts and entertainment events at venues across the city. Leeds Town Hall is regularly voted the City's favourite building. It has recently undergone a step-change in activity providing a space for the people of Leeds to engage with and experience various cultural interests. In 2013/14 the building welcomed:

215,510 people	98 further concerts/events
6,000 school children	1,853 weddings
11 graduation ceremonies	35 free lunchtime concerts
37 gigs	10,484 followers on Twitter
3 art exhibitions	650,000 visitors to our websites
110 film screenings	attendance from across all Leeds postcodes
30 world-class orchestral concerts	1 international beer festival
73 civil partnership ceremonies	

2.18 Leeds International Concert Season

2.19 One of the key responsibilities of the Arts Planning Team is to run the Leeds International Concert Season, the UK's largest local authority music programme with over 200 concerts a year. The highlight of the Season is the International Orchestral Season at Leeds Town Hall, hosting twenty national and international world-class orchestras and soloists between October and May every year. In the 2011/12 season, average attendance across this series was 70%, bucking the trend at other renowned music venues across the UK. 57% of tickets are purchased by regular attendees who sign up to the subscription service. In addition, every year over 6000 primary school children are introduced to orchestral music via schools concerts held at Leeds Town Hall.

2.20 To complement the Orchestral Season, the International Chamber Season is held at The Venue, Leeds College of Music, which also hosts a residency by the Endellion String Quartet. Subscribers make up the core audience for these concerts.

2.21 Leeds Town Hall

Over the last three years the Arts Planning Team has worked on developing and expanding the programme at Leeds Town Hall beyond just classical music to include a range of stand-up comedy, folk, world, jazz and educational events, making the building accessible to as wide a demographic as possible.

2.22 Recently Leeds Town Hall has enjoyed sell out appearances by popular names such as Jimmy Carr, Micky Flanagan, The Ukulele Orchestra of Great Britain, The

Spaghetti Western Orchestra, Sarah Millican, Kate Rusby, The Unthanks and Ladysmith Black Mambazo.

- 2.23 Outside of the city centre, music reaches out to various communities via the Leeds Best of Brass series in Morley, Yeadon and Pudsey, celebrating the Yorkshire tradition of brass banding. In addition, a unique series of sixty free lunchtime chamber and organ recitals offers the most extensive and accessible programme of free music in Britain, appealing to a diverse audience of office workers, senior citizens, the unemployed and schools. Music moves outside in the summer with around 100 free bandstand concerts across 21 of Leeds's parks, including Dartmouth Park in Morley, Horsforth Hall Park and Middleton Park.
- 2.24 The Carriageworks Theatre
- 2.25 The Arts Planning Team also manages the programming of events at the Carriageworks Theatre on Millennium Square – a 350 seat proscenium arch theatre and 65 seat studio space. This highly accessible community space showcases national and international professional touring productions, new writing, comedy and family entertainment, with the annual Christmas pantomime drawing in over 16,000 people and an average capacity of 70% over the 5 week run.
- 2.26 The Carriageworks Theatre is home to the Leeds Civic Arts Guild whose member societies provide opportunities for local communities to both participate in and experience high quality amateur productions. In addition, The Carriageworks Theatre Academy, a combined effort of the Carriageworks Theatre and Theatre Company Blah Blah Blah, gives local young people an opportunity to wholly create and perform new pieces of theatre.
- 2.27 Leeds Film
- The Leeds Film section is responsible for the delivery of two of the UK's key annual film events (Leeds International Film Festival and Leeds Young Film Festival), supporting the development of cultural film programming in the city year-round for all ages, and running the Film Academy at Leeds Town Hall, a centre for training young people in filmmaking skills.
- 2.28 Leeds International Film Festival is the UK's largest regional film event, presenting more than 250 screenings over 17 days every November at venues across the city. Around 300 films from more than 40 countries are screened during the Festival, from outstanding work by new talent to some of the biggest films of the year; the winners of the last three 'Best Film' Oscar have all had exclusive gala previews at the event. The Film Festival is also one of only 70 events in the world recognised as an official qualifying event for the Oscars. The event is funded by the British Film Institute, the EU MEDIA Fund, sponsorship, submission fees and ticket sales.
- 2.29 Leeds Young Film Festival is the UK's most interactive film event for children and young people, and a great example of the city's Child Friendly mission. Programmed in collaboration with the MediaFish team of young people, the Film Festival presents a very accessible range of screenings, workshops and special

events over 12 days during the Easter holiday period. Highlights include three filmmaking competitions, headlined by the Golden Owl Awards which celebrate the best films made by young people in the city. The event is funded by the British Film Institute, Leeds Inspired, sponsorship and ticket sales.

3. Commercial Team

The Commercial Team supports the work of Arts & Venues through business opportunities and commercial activity. Its focus is driven by income generation and business partnerships that benefit the service with a proactive, flexible and innovative approach. This team fits strongly with the 'sustainability' aspect of the question posed in this report. The core elements of the work can be defined across three key areas:

- Promote, sell and increase internal and external business hire of rooms and spaces in Leeds Town Hall and the Carriageworks Theatre
- Research, secure and sustain sponsor and partner associations that support the cultural offer across Arts & Venues
- Develop and deliver new in-house commercial events/ventures that contribute and add value to existing activity within Arts and Venues

- 2.30 The Commercial Team connects with the business community and relevant stakeholder groups across the city of Leeds and aims to build long-standing relationships that serve its core objectives. It provides and offers a wide range of dynamic and exciting opportunities for its business partners, from the unique assets available within the venues to exclusive associations with the high profile, cultural status of the events. The portfolio of hire spaces ranges from 18 meeting spaces and a modern theatre auditorium to the architectural splendour of Victoria Hall which seats up to 1200. Over the past year the team has successfully sustained a number of business relationships and attracted new business users at a time when the economic climate has been very challenging. In 2012 the team worked with 318 commercial clients and hosted 664 business events at both the Town Hall and the Carriageworks Theatre.
- 2.31 The distinct and diverse cultural offer available across Arts Events & Venues has great appeal to the business community in the city. The Commercial Team helps to broker sponsor and partner associations that range from title and brand ownership of events to in-kind support that helps to raise the profile of the activity as well as the business partner. This is a developing area of work across cultural services.
- 2.32 The team's first major event in 2012 saw the introduction of the 1st Leeds International Beer Festival at Leeds Town Hall, celebrating the best UK breweries and international beer with local food providers and live music and attracting an audience of 3,700. The vent was extended in 2014 with an independent food and drink market and more local brewery participation. In 2014 6,100 attended the event and in 2015 11,000 people attended the event.

4. Operations Team

- 2.33 The Arts & Venues Operations team is responsible for all aspects of the operation of Leeds Town Hall, The Carriageworks Theatre and Pudsey Civic Hall, ensuring the highest standards of care, satisfaction and health and safety for all users of the venue, whilst liaising closely with the Artistic Planning and Commercial teams to maximise income and artistic opportunities.
- 2.34 These three parts of the services (Arts Planning, Commercial and Operations) work closely together across the entirety of the operation and as such it is difficult to provide a straightforward analysis of associated costs of each of the areas outlined above.
- 2.35 These services account for the entire income generation of the service. It comprises not only ticket income but also event income such as the beer festival and other commercial activity, dinners, weddings and the odd Leaders Question Time on the BBC! Income generated by the service in 2014/15 was £2,458,710. Total expenditure including staffing was £3,135,280. Thus this element of the service cost £692,850.
- 2.36 The entire Arts, Events and Venues service raises income of £2.68m per year, the majority of which is ticket sales (£1.5m). Service costs are £5.65m which includes staffing of £1.49m and Arts Grants of £2.04m. Other costs include expenditure on events including the film festival and concert season. (Because it has only recently been incorporated into the service, Events/Leeds Lights budgets are recorded separately with expenditure of £1.43m and income of £0.66m in this area – see below) The service overall has a net subsidy therefore of £3.74m

Events Team & Leeds Lights

Events

The Events Team is responsible for delivering a year round programme of outdoor events and the day to day management of Millennium Square and Victoria Gardens event spaces. The events team are also responsible for advising on and facilitating the delivery of major events taking place in the city including; 2014 Tour de France Grand Depart, 2015 Rugby World Cup, 2015 & 2016 Tour de Yorkshire and the forthcoming 2016 World Triathlon series.

Current annual events core funded / subsidised by the council include; Leeds Lights Switch-On (free event for over 15,000), Ice Cube outdoor ice rink and winter attractions (over 40,000 skaters and 3,000 school children), Leeds Big Screen on Millennium Square showing a variety of national sporting and cultural events, and Jane Tomlinson Run For All 10k.

The events team also work closely with various Leeds based organisations, community groups and city stakeholders and commercial organisations to deliver other key events for the city which are cost zero / income generating including; Millennium Square Summer Series, 'Christkindelmarkt' German Christmas market (750,000 visitors), Leeds City Beach, Yorkshire Post Food & Drink Show (50,000 visitors), Leeds Half Marathon, Valentines Fair at Elland Road, St Patrick's Day Celebrations, Vaisakhi Sikh New Year, Leeds Pride plus commercial music concerts and touring productions such as the Ladyboys of Bangkok.

The total Events net managed LCC budget is £462,420 including staffing and incorporating £543,190 of generated income

Leeds Lights

The Leeds Lights team conduct a year round operation from their base in Seacroft where they design, manufacture and maintain festive motifs for both the main city centre display, including Leeds Civic Hall and Town Hall displays, as well as a paid service for numerous outer area communities, stretching over 16 miles and over 1637 motifs all across Leeds. The team is also responsible for the installation and decoration of over 90 natural and cut Christmas Trees and providing a banner erection service for the city dressing campaign.

A key feature of the service in recent years has been its strategic response to climate change and energy conservation with significant cost savings achieved through the transition to low-energy displays.

The total Leeds Lights net managed LCC budget is £305,100 including staffing and incorporating £141,360 of generated income

2.37 The **Culture and Sport Development Team** is responsible for Breeze, Leeds Inspired and the bid for 2023. It additionally provides support for other cultural activity, including major events such as the Rugby World Cup and MOBOS.

2.38 Breeze is the Council's brand for under 19's and the Breeze team works through the Breeze Culture Network with 1,001 partner organisations across the city to promote activities for young people through the Breeze web site, www.breezeleeds.org which receives on average 18,850 unique visits and 52,215 page views per month.

There are 165,851 Breeze card members which is 89.6% of the under 19's in Leeds with 26,122 (14.11%) attending events and projects delivered by the Breeze Team. Alongside universal activity, the Breeze marketing strategy is to work with Children's social care, schools, local organisations and faith groups to ensure the cultural and sporting offer reaches the most vulnerable young people in the city. Close work with Scope, Epic and the Include network has resulted in the Breeze Access guide to events and activities which supports young people with additional needs to get the most out of what is available in the city. The team raises 30% of its annual turnover through traded services and is currently working on new income generating schemes to increase that percentage.

Leeds Inspired operates an events listing and a small grants programme. It represents the enabling function of the council in terms of culture although there is also some direct delivery. During 14/15 Leeds Inspired awarded £225k of grants to 76 projects with activity taking place across 23 wards. Leeds Inspired projects have included poetry about the history of Chapeltown, plays in local community centres about Leeds United, choral concerts in shopping centres and a community banner making to celebrate the arrival of Tour De France.

Leeds Inspired projects frequently work over a range of different wards; connecting communities that might not usually meet. It also supports activities where people are connected by life experience (for example older people; people

with disabilities; young families) which contributes to the city's inclusive approach to culture both from a participation and audience perspective.

For instance, in 2014 Leeds theatre company Slung Low were commissioned by Leeds Inspired to produce an outdoor production of *The White Whale*. The show played to an audience of 3,500 people at Leeds Dock and a survey of the audience revealed that around 40% of those attending this free event had never been to the theatre before.

Leedsinspired.co.uk is powered by a community of local event organisers who upload more than 4,500 events to the website every year. The website reaches further than its own 40,000 page views per month as it now populates other events websites in the city (including Visit Leeds, Leeds Welcome, Leeds Radius and the City Dashboard) that reach new audiences.

- 2.39 The Culture and Sport Development Team raises income of £284k, mostly through Breeze. The majority of costs are staffing and Leeds inspired grants. It has a net subsidy of £1.12m

3. Main issues

- 3.1 There is no statutory duty for the council to provide cultural services. However, the background information above provides an overview of the range of cultural activities and how that they directly impact on people's lives, and council priorities. It would be true to say that not every activity is attractive to, or easily accessible by, every member of the Leeds community but this is not our ambition. Rather it is to provide a diverse programme of activity which ultimately provides 'something for everyone'. Satisfaction with cultural services is measured in part by the annual citizens survey, which records positive levels of satisfaction.
- 3.2 It is worth noting that price is by no means the only, or even the biggest, barrier to access. It is often a matter of relative choices – opera is not more expensive than football. A night out in town is often more expensive than a night out at the theatre. There are of course people who can be financially excluded from all these activities which is why free access to museums, for instance, is so important. It also contributes to our choice of major events, with Tour de Yorkshire, Tour de France and the Triathlon all free to watch from the roadside.
- 3.3 Arts Council research has suggested that the biggest positive determinant for attending arts events is having attended them as a child, with your family.
- 3.4 Austerity has led to the pressure to both increase and diversify income streams with the inherent danger that there is an over focus on income and high yielding activities, at the expense of more targeted work with minority or priority groups. There is of course a relationship between the two, with income earning events providing the money for subsidised ones.
- 3.5 In terms of events we have had to move away from those events which the council funded alone to a stronger emphasis on partnerships. We no longer operate Party in the Park, Opera in the Park or Classical Fantasia which required a subsidy together in excess of £400k. We have however maintained our support

for Light Night which has a core Council budget of only £24k and which then levers in support from elsewhere.

- 3.6 The service continues to explore innovative ways of driving up income such as reviewing pricing or developing new cultural products. The success on the Town Hall's Beer festival is a good example.
- 3.7 Efficiencies to date have been generated through a combination of significant service changes including for example staff restructures and re-rostering , facility closures, the opening of new facilities, price increases, reduction in hours on some sites, and income generating initiatives. Achieving further savings given the efficiencies already delivered remains a huge challenge.
- 3.8 There remain other income streams that, with additional capacity, the service could perhaps develop. These include commercial sponsorship, access to European funds, and enhanced marketing. All would require a potential 'invest to save' model.
- 3.9 Different operating models remain an option within the service. Again, in order to fully investigate and deliver any transformative changes and element of initial investment would be required.

4 Corporate Considerations

4.1 Consultation and Engagement

- 4.1.1 The wider report directly considers issues of engagement and access to cultural activity.

4.2 Equality and Diversity / Cohesion and Integration

- 4.2.1 There are no specific EDCI implications arising from this report, as it provides a briefing and update to the Board.

4.3 Council policies and Best Council Plan

- 4.3.1 The services contribute to a number of Best City outcomes including most directly
- Enjoy happy , healthy, active lives
 - Enjoy greater access to green spaces, leisure and the arts

4.4 Resources and value for money

- 4.4.1 The wider report considers issues of resources and value for money in respect of cultural activity.

4.5 Legal Implications, Access to Information and Call In

- 4.5.1 There are no specific legal implications related to this report, which presents information for discussion by the Scrutiny Board.

4.6 Risk Management

4.6.1 There are no specific risks related to this report, which presents information for discussion by the Scrutiny Board.

4.6.2 In addition to the Council's financial position, the cultural offering of the city (including our own Museums Service) is also underpinned by c£25m pa investment from the Arts Council. Autumn's Spending review has the potential for additional pressure on both fronts.

5 Conclusions

6 Recommendations

6.1 Scrutiny Board members are invited to:

- Comment on the work of the Culture Service
- Comment on the balance between income-earning and accessible activity

7 Background documents¹

7.1 none

¹ The background documents listed in this section are available to download from the Council's website, unless they contain confidential or exempt information. The list of background documents does not include published works.



Report author: S Pentelow

Tel: 24 74792

Report of the Head of Scrutiny and Member Development

Report to Scrutiny Board (City Development)

Date: 18 November 2015

Subject: Work Schedule

Are specific electoral Wards affected? If relevant, name(s) of Ward(s):	<input type="checkbox"/> Yes <input checked="" type="checkbox"/> No
Are there implications for equality and diversity and cohesion and integration?	<input type="checkbox"/> Yes <input checked="" type="checkbox"/> No
Is the decision eligible for Call-In?	<input type="checkbox"/> Yes <input checked="" type="checkbox"/> No
Does the report contain confidential or exempt information? If relevant, Access to Information Procedure Rule number: Appendix number:	<input type="checkbox"/> Yes <input checked="" type="checkbox"/> No

1 Purpose of this report

1.1 The purpose of this report is to consider the Scrutiny Board's work schedule for the forthcoming municipal year.

2 Main Issues

2.1 A draft work schedule is attached as appendix 1. The work programme has been provisionally completed pending on going discussions with the Board. The work schedule will be subject to change throughout the municipal year.

2.2 When considering the draft work programme effort should be undertaken to:

- Avoid duplication by having a full appreciation of any existing forums already having oversight of, or monitoring a particular issue
- Ensure any Scrutiny undertaken has clarity and focus of purpose and will add value and can be delivered within an agreed time frame.
- Avoid pure "information items" except where that information is being received as part of a policy/scrutiny review
- Seek advice about available resources and relevant timings taking into consideration the workload across the Scrutiny Boards and the type of Scrutiny taking place
- Build in sufficient flexibility to enable the consideration of urgent matters that may arise during the year

2.3 Also attached as appendix 2 is the minutes of Executive Board for 21 October 2015

3. Recommendations

3.1 Members are asked to:

- a) Consider the draft work schedule and make amendments as appropriate.
- b) Note the Executive Board minutes

4. **Background papers**¹ - None used

¹ The background documents listed in this section are available to download from the Council's website, unless they contain confidential or exempt information. The list of background documents does not include published works.

Draft Scrutiny Board (City Development) Work Schedule for 2015/2016 Municipal Year

Schedule of meetings/visits during 2015/16			
Area of review	17 June	22 July	August
Inquiries		Housing Mix – Terms of Reference	
Annual work programme setting - Board initiated pieces of Scrutiny work (if applicable)	Consider potential areas of review	Work Programming	
Budget	Budget Update 2015/16 update		
Pre Decision Scrutiny			
Policy Review			
Recommendation Tracking			
Performance Monitoring	Performance Report	Housing on Brownfield Land – 5 year land supply East Leeds Extension and Orbital Road Progress	
Working Groups			

*Prepared by S Pentelow

Draft Scrutiny Board (City Development) Work Schedule for 2015/2016 Municipal Year

Schedule of meetings/visits during 2015/16			
Area of review	9 September	14 October	18 November
Inquiries	<p>Agree scope of review for **</p> <p>1) Digital Divide and High Speed Broadband Provision.</p> <p>2) Operation of Bus Services</p>	<p>Evidence Gathering</p> <p>Inquiry – Digital Inclusion</p>	<p>Evidence Gathering</p> <p>Inquiry – Digital Inclusion</p>
Pre Decision Scrutiny		<p>Sustainability of council leisure facilities and how accessible they are to residents to promote inclusivity</p> <p>To Include:</p> <ul style="list-style-type: none"> • Leeds Let's Get Active evaluation – Scheduled for Ex B 21 October 	<p>Sustainability of council cultural facilities and how accessible they are to residents to promote inclusivity</p> <p>European Capital of Culture – The Culture Strategy – Developing approach and outline draft.</p>
Policy Review	Road Safety, death and serious injury reduction and 20mph zones. (to conclude 20mph work from 2013/14)		
Recommendation Tracking			
Performance Monitoring			
Working Groups	Inquiry - Housing Mix (with Scrutiny Environment and Housing)		

* Prepared by S Pentelow

Draft Scrutiny Board (City Development) Work Schedule for 2015/2016 Municipal Year

Schedule of meetings/visits during 2015/16			
Area of review	16 December	27 January	17 February
Inquiries	<u>Evidence Gathering</u> Inquiry - Digital Inclusion	<u>Evidence Gathering</u> Inquiry – Bus Services	<u>Evidence Gathering</u> Inquiry – Bus Services
Budget and Policy Framework		Initial Budget Proposals 2016/17 and Budget Update	
Pre Decision Scrutiny			
Policy Review			More Jobs Better Jobs for Leeds residents – Reducing in work poverty, using powers and influence through City growth and investment to promote and create local employment and skills opportunities (Following on from annual report/inquiry with wider focus)
Recommendation Tracking			
Performance Monitoring		Performance Report - Quarter 2 (with quarter 3 to be submitted as late supplementary information for despatch on the 22 nd Jan)	Tour de France Legacy Review (SEC Board 2014/15)
Working Groups		Inquiry – Working Group Digital Inclusion	Inquiry – Working Group Bus Services

Page 79

Draft Scrutiny Board (City Development) Work Schedule for 2015/2016 Municipal Year

Area of review	Schedule of meetings/visits during 2015/16		
	30 March	27 April	May
Inquiries	<u>Evidence Gathering</u> Inquiry – Bus Services	Agree Inquiry Reports	
Budget and Policy Framework	Local Flood Risk Management Strategy Annual scrutiny review		
Pre Decision Scrutiny	European Capital of Culture – The Culture Strategy – Consultation with the Scrutiny Board.		
Recommendation Tracking			
Performance Monitoring			
Working Groups	Inquiry – Working Group Bus Services		

Page 80

Unscheduled - required:

- ECOC and the new city cultural strategy – Scheduled for Executive Board approx August 2016. Pre-decision Scrutiny required in 2016 new municipal year before submission
- Housing on Brownfield Land – 5 year land supply (ExB date to be confirmed - Jan or Feb 2016) – Discussed with A Brannen
- East Leeds Extension and Orbital Road Progress ((ExB date to be confirmed - Jan or Feb 2016) – Discussed with A Brannen
- Vision for Leisure Centres
- SAP and Aire Valley Action Plan

Updated – November 2015

*Prepared by S Pentelow

Key: SB – Scrutiny Board (City Development) Meeting

WG – Working Group Meeting

EXECUTIVE BOARD

WEDNESDAY, 21ST OCTOBER, 2015

PRESENT: Councillor J Blake in the Chair

Councillors D Coupar, M Dobson, S Golton,
J Lewis, R Lewis, L Mulherin, M Rafique
and L Yeadon

SUBSTITUTE MEMBER: Councillor J Procter

APOLOGIES: Councillor A Carter

56 Substitute Member

Under the terms of Executive and Decision Making Procedure Rule 3.1.6, Councillor J Procter was invited to attend the meeting on behalf of Councillor A Carter, who had submitted his apologies for absence from the meeting.

57 Exempt Information - Possible Exclusion of the Press and Public

RESOLVED – That, in accordance with Regulation 4 of The Local Authorities (Executive Arrangements) (Meetings and Access to Information) (England) Regulations 2012, the public be excluded from the meeting during consideration of the following parts of the agenda designated as exempt on the grounds that it is likely, in view of the nature of the business to be transacted or the nature of the proceedings, that if members of the public were present there would be disclosure to them of exempt information so designated as follows:-

- (a) Appendix 3 to the report entitled, 'The Regeneration of the New Briggate Area', referred to in Minute No. 71 is designated as exempt from publication in accordance with paragraph 10.4(3) of Schedule 12A(3) of the Local Government Act 1972 on the grounds that the information contained within the submitted appendix relates to the financial or business affairs of a particular organisation and of the Council. It is considered that the public interest in maintaining the content of the appendix as exempt from publication outweighs the public interest in disclosing the information, due to the impact that disclosing the information would have on the Council and third parties.
- (b) Appendix 2 to the report entitled, 'East Leeds Extension Update and Next Steps', referred to in Minute No. 74 is designated as exempt from publication in accordance with paragraph 10.4(3) of Schedule 12A(3) of the Local Government Act 1972 on the grounds that the information contained within the submitted appendix relates to the financial or business affairs of a particular person, and of the Council. This information is not publicly available from the statutory registers of information kept in respect of certain companies and charities. It is

Draft minutes to be approved at the meeting
to be held on Wednesday, 18th November, 2015

considered that since this information was obtained through initial one to one discussions for the acquisition of the property/land, then it is not in the public interest to disclose this information at this point in time.

Also, it is considered that the release of such information would or would be likely to prejudice the Council's commercial interests in relation to other similar transactions in that prospective purchasers of other similar properties would have access to information about the nature and level of consideration which may prove acceptable to the Council. It is considered that whilst there may be a public interest in disclosure, much of this information will be publicly available from the Land Registry following completion of this transaction and consequently the public interest in maintaining the exemption outweighs the public interest in disclosing this information at this point in time.

58 Late Items

There were no late items as such, however, prior to the meeting Board Members were provided with the following for their consideration:

- Correspondence which clarified that in relation to agenda item 16 (The Regeneration of the New Briggate Area), those references in paragraph 5.1, Recommendation 4(a) and Recommendation 6.1(a) should read *26-32 Merrion Street*, rather than *26-32 Merrion Way* (Minute No. 71 refers);
- An updated version of the covering report and appendix 3 to agenda item 18 (The Community Infrastructure Levy: Spending of the Neighbourhood Fund and Other Spending Matters) (Minute No. 73 refers);
- An updated version of appendix B to agenda item 20 (Learning Places Programme: Capital Programme Update) (Minute No. 75 refers).

59 Declaration of Disclosable Pecuniary Interests

There were no Disclosable Pecuniary Interests declared at the meeting, however in relation to the agenda item entitled, 'The Regeneration of the New Briggate Area', Councillors J Procter and Yeadon drew the Board's attention to their respective positions on the Leeds Grand Theatre and Opera House Board of Management (Minute No. 71 refers).

60 Minutes

RESOLVED – That the minutes of the previous meeting held on 23rd September 2015 be approved as a correct record.

COMMUNITIES

61 Long Term Strategic Partnership with Leeds City Credit Union

The Assistant Chief Executive (Citizens and Communities) submitted a report which provided an update on the Council's continued joint work with Leeds City Credit Union (LCCU) to tackle poverty in Leeds. In addition, the report also presented the long-term strategy for ongoing partnership working and

specifically, set out the options available in respect of the Council's continuing financial support and future investment in such matters.

Members welcomed the contents of the submitted report, placed on record their thanks for the valuable and innovative work being undertaken in this area and highlighted how such work provided a key example of civic enterprise.

RESOLVED -

- (a) That the significant progress made and the projects developed through the partnership between the Council and Leeds City Credit Union, which has helped in the delivery of the Council's strategic objectives on financial inclusion and poverty alleviation be noted and welcomed, and that the ongoing strategic approach towards the partnership work also be welcomed;
- (b) That authority be given to the Council entering into an agreement with the Credit Union in connection with the continuing support from the Council to the Credit Union, with the approval of the terms of such an agreement being delegated to the Assistant Chief Executive (Citizens and Communities);
- (c) That approval be given to the re-scheduling of the loan to the Credit Union, as set out in paragraph 3.38 of the submitted report, with the detailed arrangements being subject to determination by the Assistant Chief Executive (Citizens and Communities).

62 Re-location of Red Hall Horticultural Nursery to Whinmoor Grange

Further to Minute No. 76, 4th September 2013, the Director of Environment and Housing submitted a report regarding the latest designs and costs relating to the relocation of the Parks and Countryside horticultural nursery from Red Hall to Whinmoor Grange along with the relocation of other operational services currently based at Red Hall. In addition, the report sought approval of an injection into the capital scheme and subsequent expenditure of £6.5m for the construction and relocation works from Red Hall to Whinmoor Grange.

The Board paid tribute to the valuable work undertaken by the horticultural nursery service. Furthermore, Members emphasised the ongoing partnership work taking place between the service and community organisations across the city and highlighted the need for such partnership working to continue and develop further with the help of the proposed new facility.

A Member raised the issue of the proposed entry point to the facility and highlighted the need to ensure that it remained in keeping with the wider area.

RESOLVED –

- (a) That an injection of £6.5m into Capital Scheme No. 32415/000/000 be approved;

- (b) That expenditure of up to £6.5m to design and build a replacement horticultural nursery for Leeds City Council Parks and Countryside at Whinmoor Grange and for the relocation of other services from the existing Red Hall depot, be approved, subject to planning approval and Local Growth Fund loan agreement;
- (c) That in accordance with Contracts Procedure Rule 3.1.8, approval be given to the selection of a single stage develop and construct procurement approach via an open non-EU procurement, in order to obtain a specialist contractor to undertake the proposed construction of a horticultural nursery glasshouse at Whinmoor Grange, with the evaluation criteria of 70% of marks for the lowest compliant cost and 30% of marks for quality criteria;
- (d) That the current designs, as detailed at appendix 1 to the submitted report, and the costs for Whinmoor Grange nursery, be approved, subject to the necessary planning approval;
- (e) That it be noted that the Chief Officer (Parks and Countryside) will be responsible for the implementation of such matters, and to ensure that the Parks and Countryside service vacate the Red Hall site by the end of 2016.

63 Commissioning a new model for the delivery of Supporting People Services

The Director of Environment and Housing submitted a report providing a performance summary of the Housing Related Support commissioned programme during 2014/15 and updating the Board on the review and progress made towards developing a new model for the city which included the intended outcomes and benefits. In addition, the report sought the Board's input and guidance on the model and forward work programme.

Members welcomed the proposed key principles and features of the new model, with reference being made to the person centred approach and the potential establishment of a triage system.

RESOLVED –

- (a) That the progress of the review, as detailed within the submitted report, be noted;
- (b) That approval be given to proceed with the recommendations within the submitted report for the re-procurement / re-contracting of housing related support services in the context of the proposed key principles and features of a new model to a maximum budget of £10.4 million;
- (c) That it be noted that the Director of Environment and Housing will use his delegated authority in order to take commissioning and decommissioning decisions which will be a direct consequence of this key decision. (For example, approval of the detailed specifications for the procurement and subsequent contract awards, which will be at

most significant operational decisions. This is subject to the decisions being in line with the key principles and features as described within the submitted Executive Board report).

ENVIRONMENTAL PROTECTION AND COMMUNITY SAFETY

64 Improving Air Quality within the City

Further to Minute No. 139, 17th December 2014, the Director of Environment and Housing and the Director of Public Health submitted a joint report providing an update on the progress which had been made since the submission of the previous report. In addition, the report also provided details of health implications arising from air quality levels, on the West Yorkshire Low Emission Strategy Paper, Leeds' action plan and also on a number of current and related funding opportunities.

Responding to Members' enquiries, officers provided an update on the range of actions currently being taken to improve air quality in Leeds. In addition, it was highlighted that further monitoring of air quality levels was to be undertaken which would enable more quantifiable actions to be identified, and it was noted that such information would be presented to the Board for consideration.

Furthermore, Members highlighted the pivotal role to be played by the public in improving air quality levels in Leeds, and emphasised the vital importance of raising the public awareness and understanding of such matters.

RESOLVED –

- (a) That the raising of the public's awareness and understanding of such matters be identified as a key priority in the approach towards improving air quality levels in Leeds;
- (b) That the progress which the Council has made to date and its plan for the expansion of its own alternative fuel vehicles and associated infrastructure, be noted;
- (c) That the West Yorkshire Low Emissions Strategy (WYLES) and Leeds' Air Quality Action Plan, be endorsed;
- (d) That the PM2.5 targets for 2020 and 2030, as referred to within paragraph 3.6 of the submitted report be adopted;
- (e) That the allocation of parking spaces for electric vehicles in Council car parks, to be implemented by the end of the financial year as part of the 'Cutting Carbon and Improving Air Quality' breakthrough project, be supported;
- (f) That the enforcement of the planning conditions on new developments to increase charging infrastructure across the city be supported, which is an on-going action that falls under the Chief Planning Officer's responsibility to monitor all new developments;

- (g) That the establishment of walking and cycling friendly infrastructure be supported, with the use of appropriate planning conditions to ensure that new developments support alternative modes of transport;
- (h) That support be given to further work being undertaken to determine the scope and number of potential Clean Air Zones required within the city in order to ensure that compliance with EU directives is met as a minimum, and which will look to improve public health outcomes for the citizens of Leeds;
- (i) That it be noted that the Director of Environment and Housing will oversee the delivery of the study and will submit a progress report to Executive Board as part of the breakthrough project's annual report.

(Under the provisions of Council Procedure Rule 16.5, Councillor S Golton required it to be recorded that he abstained from voting on the matters referred to within this minute)

ECONOMY AND CULTURE

65 Strong Economy, Compassionate City

The Chief Executive submitted a report which presented the Council's vision for a strong economy and compassionate city and highlighted the actions being taken to sustain and accelerate the economic progress that the city has achieved, whilst also ensuring that all people and communities in Leeds contributed towards and benefitted from such economic success.

Responding to Members' enquiries, it was noted that the update report, scheduled to be submitted to the Board in Spring 2016 would provide further information on the actions being taken in the areas of social enterprise and also inward investment.

Members highlighted the linkages between the Council's breakthrough projects and the vision to have a strong economy and be a compassionate city. Also, the Board considered the role played by the Government in the development of the city's economy. Furthermore, emphasis was placed upon the important contribution made by Leeds' cultural offer towards the Council's overarching vision.

RESOLVED –

That the following be approved:-

Tackling Low Pay

- i) **Living wage city** – Leeds City Council will work with partners to develop a Living Wage City campaign to encourage employers to pay the Living Wage as accredited by the National Living Wage Foundation. The aim should be to significantly increase the number of Living Wage businesses in Leeds over the next year.

- ii) **Supporting people to get better jobs** – Leeds City Council will work with the Leeds City Region Enterprise Partnership, the Chamber of Commerce and education and training providers in order to develop proposals to create a careers advice and in-work progression service, and support for employers, aimed at helping people move out of low paid work into better jobs.

Regenerating places

- iii) **A new approach to regeneration** – the Council will identify a rolling programme of prioritised schemes in deprived areas, with an emphasis upon bringing together the approach to supporting people and communities with interventions to deliver positive physical development and change, with a particular focus on early intervention to tackle the causes of poverty. A report recommending the details of the approach be submitted to Executive Board by early 2016.

A life ready for learning – putting children at the heart of the growth strategy

- iv) **Strengthening business engagement in schools** – The Council will work with business leaders, head teachers, universities and colleges and leading experts and enterprises in the third sector to look at how to build on existing work to strengthen business engagement in Leeds schools, with the aim of ensuring that all secondary schools, particularly those with a high proportion of pupils from deprived areas, have strong partnerships with business.
- v) **Enhancing careers advice and guidance for young people** – The Council will work with business leaders, head teachers, universities and colleges, leading experts in the third sector, and the national Careers and Enterprise Company to look at how to strengthen independent careers advice in schools, with the aim of ensuring that all secondary schools are offering good quality careers advice.

Supporting business to invest in growth and communities

- vi) **Key Account Management** – the Key Account Management approach to working with businesses should be extended across the Council and a wider range of businesses in order to strengthen the approach to promoting business growth and community investment, with the aim of ensuring regular contact with 150 businesses that are significant strategically.
- vii) **Promoting community investment** – the Council works with other organisations and business leaders in order to develop an initiative to encourage more businesses in Leeds to commit to investing in their workforce and their local communities, with the aim being for 50 businesses to strengthen their community investment work.

Creating quality places and spaces

- viii) **Creating quality places and spaces** – we will continue to seek to improve the quality of design of new development, including through refreshing the ‘Neighbourhoods for Living’ design guidance document.
- ix) **Securing good jobs and skills outcomes from major development and infrastructure projects** – we will set out how we will build on the achievements and learning over recent years to set out how we can strengthen our approach to using major developments and infrastructure projects to support training and jobs for local people. A report setting out the details of this approach be submitted to Executive Board by early 2016.

Backing innovators and entrepreneurs

- x) **Keeping graduates in Leeds** – we will develop an initiative to improve levels of graduate retention in Leeds, including interventions to help tackle skills shortages and fill vacancies at graduate level in the digital sector, and a Leeds graduate careers fair and clearing system to connect students to future job opportunities in Leeds. A report setting out the details of this approach be submitted to Executive Board by early 2016.
- xi) **Backing innovators** – we will develop an initiative to support the future growth of innovative businesses that have been incubated by Universities and other bodies, and are now looking to grow and move on to new business space and employ more people. A paper setting out the details of this approach should be submitted to Executive Board by early 2016.
- xii) **Backing entrepreneurs** – we will develop a new enterprise programme using European Funds to provide support for people starting new businesses. We will also provide support for small business accelerators in the city, including the proposed digital business accelerator.

Next Steps

- xiii) That it be noted that the Chief Executive, supported by the Chief Officer Economy and Regeneration, is responsible for the implementation of such matters, and will update Executive Board on progress in spring 2016.

66 Medium Term Financial Strategy 2016/17 - 2019/20

The Deputy Chief Executive submitted a report setting out the principles and assumptions underlying the proposed financial strategy for the Council covering the years 2016/17 to 2019/20.

Members were provided with the timescales and framework for the preparation of the 2016/17 Initial Budget Proposals which were scheduled to be presented to the Board in December 2015 and which would inform the Council’s future priorities and strategies. It was also noted that announcements regarding the Government’s Spending Review and details of

the Local Government Settlement would not be released until November and December 2015 respectively.

Furthermore, the Board was provided with an update on the current position regarding the Public Health grant and the implications arising from the in-year reduction which was announced in June 2015. Also, cross-party support was sought in relation to raising the Council's concerns on the current in-year grant reduction, and also in respect of the Council's future allocation of Public Health grant.

RESOLVED – That the Medium Term Financial Strategy for 2016/17 – 2019/20 be approved, and that agreement be given for the assumptions and principles, as outlined within the submitted report, being used as a basis for the detailed preparation of the Initial Budget Proposals for 2016/17 and which will inform the Council's future priorities and strategies.

RESOURCES AND STRATEGY

67 Financial Health Monitoring 2015/16 - Month 5

The Deputy Chief Executive submitted a report setting out the Council's projected financial position for 2015/16 together with other key financial indicators, after 5 months of the financial year.

Responding to a Member's enquiry, it was undertaken that the Member in question would be provided with an update on the financial position regarding the healthy schools initiative and also the Early Years service. Furthermore, officers undertook to provide an update to the same Member on the projected shortfall in advertising income.

RESOLVED - That the projected financial position of the Council for 2015/16, as detailed within the submitted report, be noted.

68 Gambling Act 2005 Statement of Licensing Policy

Further to Minute No. 29, 15th July 2015, the Assistant Chief Executive (Citizens and Communities) submitted a report on the Statement of Licensing Policy in respect of the Gambling Act 2005. The report included the comments of the Scrutiny Board (Citizens and Communities) and recommended that the matter be referred to full Council for formal approval, in accordance with the Council's Budget and Policy Framework Procedure Rules.

In considering the report, emphasis was placed upon the importance of the national lobby regarding the impact of gambling and also on the introduction of Local Area Profiles and the proposed involvement of Community Committees in the development of such profiles.

RESOLVED – That the contents of the submitted report be noted, which includes the comments of the Scrutiny Board (Citizens and Communities), and that the matter be referred to full Council for the purposes of formal approval.

(In accordance with the Council's Executive and Decision Making Procedure Rules, the matters referred to within this minute were not eligible for Call In as the power to Call In decisions does not extend to those decisions made in accordance with the Budget and Policy Framework Procedure Rules, which includes those resolutions above)

EMPLOYMENT, ENTERPRISE AND OPPORTUNITY

69 Equality Update: Improvement Priorities 2016-2010, and the Equality Framework Re-accreditation

The Assistant Chief Executive (Citizens and Communities) submitted a report setting out the approach taken to develop the Equality Improvement Priorities 2016-20 and how these priorities supported the ambitions of the city. In addition, the report also outlined the plans for the Council's reassessment against the Equality Framework for Local Government, in which the local authority currently held an 'excellent' accreditation.

Members welcomed the contents of the submitted report, and it was emphasised that equality improvement was a key priority for the Council. In addition, it was acknowledged that a proactive approach needed to continue in order to ensure that the Council was an attractive employer to all communities.

Responding to a Member's specific enquiry, an update was provided on the actions being taken to promote the Council as an employer at graduate level.

RESOLVED -

- (a) That the contents of the submitted report, be noted;
- (b) That the contents of the Equality Framework narrative be noted, and that an update on the outcomes and actions arising be provided to Executive Board in Spring 2016;
- (c) That the Equality Improvement Priorities 2016-20 be endorsed, and that it be noted that annual reports will be provided on progress against these.

REGENERATION, TRANSPORT AND PLANNING

70 An Approach to Street Design and the Public Realm in Leeds City Centre

The Director of City Development submitted a report outlining an approach towards street design and the public realm. The report identified some key principles to ensure schemes were designed and implemented within agreed corporate parameters and objectives, and included artist impressions of how the city centre may look if such an approach was adopted. Additionally, the submitted report included a prioritised programme for public realm improvements in the city centre.

Members discussed the potential approach towards the promotion of more pedestrian accessible spaces in the city centre and the impact of such an

approach. In addition, the Board considered the benefits of simplistic and consistent designs and also the sources of funding which could be used for such initiatives.

In conclusion, emphasis was placed upon the need for the associated consultation exercise which was proposed to be as comprehensive and inclusive as possible.

RESOLVED –

- (a) That the principle of the Council developing a strategic plan for public realm improvements in the City Centre, based upon the principles as outlined in paragraph 3.7 of the submitted report, be endorsed;
- (b) That approval be given to the Council consulting and engaging with stakeholders on potential schemes to be brought forward, based upon the design ideas and opportunities document, as detailed at Appendix 1 to the submitted report;
- (c) That subject to the outcome of the consultation, officers be requested to submit a report to a future Executive Board outlining a proposal plan of public realm improvements, costings and funding, and that it be noted that the Head of Strategic Projects, City Development, will be responsible for the submission of this report.

71 The Regeneration of the New Briggate Area

The Director of City Development submitted a report regarding the issues and opportunities related to the regeneration of the New Briggate area. The report identified how the area could be re-energised through partnership working between the Council and other stakeholders.

It was noted that prior to the meeting, correspondence had been circulated to Board Members clarifying that those references in paragraph 5.1, Recommendation 4(a) and Recommendation 6.1(a) should read *26-32 Merrion Street*, rather than *26-32 Merrion Way*.

Following consideration of Appendix 3 to the submitted report, designated as exempt from publication under the provisions of Access to Information Procedure Rule 10.4(3), which was considered in private at the conclusion of the meeting, it was

RESOLVED –

- (a) That approval be given to 26-32 Merrion Street being declared surplus and marketed, with the property being added to the capital receipt programme. In addition, it also be agreed that the approval for the terms of any such disposal be delegated to the Director of City Development;
- (b) That in principle support be given to the invitation of proposals for the potential development of the pay and display car park and the re-ordering of the public open space at Belgrave Gardens, for further

consideration by the Council, in order to provide an additional capital receipt;

- (c) That officers be requested to undertake an initial 'expressions of interest' marketing exercise for the lease of 34-40 New Briggate (i.e. the vacant shops under The Grand and Howard Assembly Rooms) with a reverse premium payment available (as detailed within the exempt Appendix 3 to the submitted report);
- (d) That officers be requested to develop an initial feasibility scheme for improvements to the public realm of New Briggate and the immediate surrounding area;
- (e) That officers be requested to continue partnership working and improvements to the public realm in order to stimulate the regeneration of this area, and to develop options above and beyond the 'match funding' of any contribution by the Council; and
- (f) That officers be requested to report back to Executive Board on progress in due course;
- (g) That it be noted that the Head of Land and Property will be responsible for the implementation of matters relating to resolutions a), b) and c) above and that the Head of Strategic Projects, City Development, will be responsible for the implementation of matters regarding resolutions d), e) and f) above.

72 Our Transport Vision for a 21st Century Leeds

The Director of City Development submitted a report setting out a transport vision for Leeds as a prosperous, liveable, healthy and sustainable 21st century city. In addition, the report recognised the challenges and complexities of changing the way we travel into and around the city in order to create a more people friendly and productive urban core, identifying the key policy principles that the Council would need to adopt in order to deliver a transport system fit for a Leeds as a 21st century city.

Members discussed the range of initiatives which were currently being used to address the volume of car journeys within the city centre, and also considered the issue of car parking provision and the role which such provision could play in the overall transport vision.

When considering the suite of reports which had been submitted to the Board regarding pedestrian movement, transport and the public realm, it was suggested that when such matters were presented to the Board in the future, consideration be given to them being presented as one package.

RESOLVED –

- (a) That the transport vision, as outlined in paragraph 3.11 of the submitted report be approved, and that the key policy principles, as

presented within the paragraphs (a) – (i) of the same report, be adopted;

- (b) That officers be requested to use the vision and principles to work with the West Yorkshire Combined Authority in order to help shape the Single Transport Plan, and that as part of this, develop a compelling ambition for investment in an integrated mass transit network with supporting strategic park and ride infrastructure, and HS2 connectivity package;
- (c) That officers be requested to submit a report to Executive Board in 2016 which reviews the long term options for the Leeds Inner Ring Road;
- (d) That in accordance with the Leeds Core Strategy Local Development Framework, officers be requested to submit a Car Parking Supplementary Planning Document to Executive Board for the purposes of adoption during 2016;
- (e) That in partnership with the Communications Team and the West Yorkshire Combined Authority, officers be requested to develop a holistic transport communications strategy, compatible with social media that engages key stakeholders, government, and the general public in a city wide conversation;
- (f) That the Director of City Development be instructed to co-ordinate the work, as detailed within the resolutions above, with an update being submitted to Executive Board in 2016.

73 The Leeds Community Infrastructure Levy - Spending of the Neighbourhood Fund and Other Spending Matters

Further to Minute No. 156, 11th February 2015, the Director of City Development and the Assistant Chief Executive (Citizens and Communities) submitted a joint report detailing the process undertaken to generate spending guidance for Community Committees in making decisions on the Community Infrastructure Levy (CIL) Neighbourhood Fund, with a number of potential options being presented for consideration. Additionally, the report also proposed some minor changes to the Regulation 123 List and the withdrawal of the Council's policy allowing discretionary charitable relief for investment activities to address and clarify some implementation issues following 6 months of charging.

Prior to the meeting, Board Members had been provided with an updated version of the covering report and appendix 3, for their consideration, which superseded the versions contained within the original agenda papers.

Responding to an enquiry, the Board was provided with details of how receipts from CIL could potentially be brought forward and incorporated into the Council's budget process.

Having discussed the issue of the CIL neighbourhood fund being allocated to the local Community Committee in those areas where there was no town or parish council, it was highlighted that such matters were already being discussed with Community Committee Chairs, and it was noted that Executive Board would be kept fully informed as discussions in this area continued.

RESOLVED –

- (a) That approval be given to the CIL neighbourhood fund spending guidance for use by Community Committees, as set out in Appendix 1 to the submitted report;
- (b) That the proposed minor changes to the Regulation 123 List, as set out in Appendix 2 to the submitted report be agreed, that it be noted that such changes will be subject to local consultation and that the Chief Planning Officer be authorised to consider any representations made and to make any further amendments considered necessary as a result of the consultation, prior to the implementation of the revised list;
- (c) That approval be given to the removal of the Council's policy allowing discretionary charitable relief for investment activities, to take effect from 1 December 2015;
- (d) That the amendment to the Community Committee Executive Delegation Scheme, as set out within Appendix 3 to the submitted report, as revised and circulated to Board Members prior to the meeting, be approved, noting that the delegation is shared with the Assistant Chief Executive (Citizens and Communities);
- (e) That it be noted that the Chief Planning Officer will be responsible for the implementation of such matters.

74 East Leeds Extension update and next steps

The Director of City Development submitted a report regarding the progress made in planning for the delivery of major housing growth and infrastructure investment in the East Leeds Extension. The report also sought specific approval on a number of matters which would enable the investment to progress.

Members noted how the East Leeds Orbital Road was a key piece of infrastructure which was integral to the East Leeds Extension development, and as such, raised concerns regarding the lead role that the Council was being required to take in order to ensure that the Orbital Road was delivered.

Following consideration of Appendix 2 to the submitted report, designated as exempt from publication under the provisions of Access to Information Procedure Rule 10.4(3), which was considered in private at the conclusion of the meeting, it was

RESOLVED –

- (a) That the submitted report, together with the positive progress made by the Council in its enabling activities to bring forward the major strategic growth area of the East Leeds Extension and the major infrastructure project for the East Leeds Orbital Road, be noted;
- (b) That in principle approval be given to the Council continuing to develop a funding case for the costs of the East Leeds Orbital Road through the West Yorkshire Plus Transport Fund, prudential borrowing and developer contributions, with the Council also continuing to explore alternative means of financing;
- (c) That the commitment to the East Leeds Orbital Road Roof Tax be reaffirmed as the principle mechanism through which developer contributions will be secured from the East Leeds Extension towards the delivery costs of the East Leeds Orbital Road, as set out in paragraphs 3.1.6 – 3.1.8 of the submitted report;
- (d) That the programme for the planning, procurement and construction of the East Leeds Orbital Road, as set out in paragraphs 3.1.10 – 3.1.13 of the submitted report be noted, and that approval be given for the Chief Officer (Highways and Transportation) to submit a detailed planning application for the project, in consultation with the Executive Member for Regeneration, Transport and Planning;
- (e) That the progress made in assembling land to facilitate the route of the East Leeds Orbital Road at the Northern Quadrant be noted, and that the recommendations, as detailed within the exempt Appendix 2 to the submitted report, be approved;
- (f) That it be noted that the Council will make land available on the Red Hall site for the initial A58 junction infrastructure which will enable access to the Northern Quadrant site, as set out in paragraphs 3.3.12 – 3.3.14 of the submitted report, subject to the discharge of relevant statutory processes by the Head of Land and Property and the delegated approval of the Director of City Development;
- (g) That approval be given for the Chief Planning Officer to prepare and publish a Draft Planning Brief for Red Hall, with the detailed timetable to be agreed with the Executive Member for Regeneration, Transport and Planning;
- (h) That approval be given to the approach towards marketing and disposal of the Red Hall site, as set out in paragraphs 3.4.18 – 3.4.22 of the submitted report, with the details to be confirmed by the Director of City Development in consultation with the Executive Member for Regeneration, Transport and Planning;
- (i) That approval be given for the Chief Planning Officer to prepare and publish a Draft Development Framework for the Southern and Middle

Quadrants, with the detailed timetable to be agreed with the Executive Member for Regeneration, Transport and Planning;

- (j) That a co-ordinated programme of public and stakeholder engagement for the East Leeds Extension from November 2015 be approved, which will include public consultation on the East Leeds Orbital Road, Red Hall and the Southern & Middle Quadrants, with the details being confirmed by the Head of Regeneration in consultation with the Executive Member for Regeneration, Transport and Planning and also Ward Members.

CHILDREN AND FAMILIES

75 Learning Places Programme - Capital Programme Update

Further to Minute No. 187, 22nd April 2015, the Director of Children's Services, the Deputy Chief Executive and the Director of City Development submitted a joint report presenting an update on the three year strategy for providing sufficient school places in the city, and also on the progress made in respect of the projects currently forming part of the Learning Places Programme. In addition, the report sought the Board's approval for further authority to spend on the programme, and provided an update on the applications submitted and approved for access to the programme risk fund.

Prior to the meeting, Board Members had been provided with an updated version of appendix B to the submitted report, for their consideration, which superseded the version contained within the original agenda papers.

Responding to a Member's enquiry, the Board received an update on the outcomes of the research undertaken by Leeds Beckett University regarding the relationship between the size of a school and the educational outcomes, and it was undertaken that full details would be provided to the Member in question.

The Board also received an update on the continued work of the cross-party steering group, with emphasis being placed upon the Council's commitment to continue such work on a cross-party basis.

In discussing the approach being taken by the Council in respect of the Learning Places Programme, it was highlighted that although all available options would be considered as part of the strategy to ensure there were sufficient good quality learning places in Leeds, the key priority was to ensure that the specific needs of the local community were met.

RESOLVED –

- (a) That additional authority to spend on the Learning Places programme for the Roundhay scheme, with a value of £13m, be approved, which resets the overall approval of the schemes currently in the programme to £56.355m;

- (b) That approval be given for the balance of the programme risk fund to be reset to £5.635m, in order to facilitate effective risk management at programme level;
- (c) That approval be given for any savings made on applications to the programme risk fund being returned to the risk fund in order to support the continued management of programme risks;
- (d) That the scale of identified need at primary level, and the indicative financial implications of £146m, be noted;
- (e) That the projected funding deficit which currently stands at £69.5m and is based on Education Funding Agency (EFA) rates, be noted, and that it also be noted that this figure is likely to increase due to a number of factors, as set out in paragraph 4.4.5 of the submitted report;
- (f) That it be noted that the Head of Learning Systems continues to have client responsibility for the programme, and that the Chief Officer, Projects, Programmes and Procurement Unit continues to be responsible for the delivery of the projects in the Learning Places programme.

DATE OF PUBLICATION: FRIDAY, 23RD OCTOBER 2015

**LAST DATE FOR CALL IN
OF ELIGIBLE DECISIONS:** 5.00 P.M., FRIDAY, 30TH OCTOBER 2015

(Scrutiny Support will notify Directors of any items called in by 12.00noon on Monday, 2nd November 2015)

This page is intentionally left blank